



Targeted optical fluorescence imaging: a meta-narrative review and future perspectives

H. M. Schouw¹ · L. A. Huisman¹ · Y. F. Janssen¹ · R. H. J. A. Slart^{2,3} · R. J. H. Borra^{2,4} · A. T. M. Willemsen² · A. H. Brouwers² · J. M. van Dijk⁵ · R. A. Dierckx^{2,6} · G. M. van Dam^{2,7} · W. Szymanski⁴ · H. H. Boersma^{2,8} · S. Kruijff^{1,2}

Received: 31 May 2021 / Accepted: 23 July 2021
© The Author(s) 2021

Abstract

Purpose The aim of this review is to give an overview of the current status of targeted optical fluorescence imaging in the field of oncology, cardiovascular, infectious and inflammatory diseases to further promote clinical translation.

Methods A meta-narrative approach was taken to systematically describe the relevant literature. Consecutively, each field was assigned a developmental stage regarding the clinical implementation of optical fluorescence imaging.

Results Optical fluorescence imaging is leaning towards clinical implementation in gastrointestinal and head and neck cancers, closely followed by pulmonary, neuro, breast and gynaecological oncology. In cardiovascular and infectious disease, optical imaging is in a less advanced/proof of concept stage.

Conclusion Targeted optical fluorescence imaging is rapidly evolving and expanding into the clinic, especially in the field of oncology. However, the imaging modality still has to overcome some major challenges before it can be part of the standard of care in the clinic, such as the provision of pivotal trial data. Intensive multidisciplinary (pre-)clinical joint forces are essential to overcome the delivery of such compelling phase III registration trial data and subsequent regulatory approval and reimbursement hurdles to advance clinical implementation of targeted optical fluorescence imaging as part of standard practice.

Keywords Optical fluorescence imaging · Fluorescence · Oncology · Cardiovascular disease · Infectious disease

This article is part of the Topical Collection on Miscellanea.

H. M. Schouw and L. A. Huisman share first authorship and contributed equally to this work.

H. H. Boersma and S. Kruijff share last authorship and contributed equally to this work.

✉ S. Kruijff
s.kruijff@umcg.nl

¹ Department of Surgery, University of Groningen, University Medical Centre Groningen, Groningen, The Netherlands

² Department of Nuclear Medicine and Molecular Imaging, University of Groningen, University Medical Centre Groningen, Groningen, The Netherlands

³ Department of Biomedical Photonic Imaging, Faculty of Science and Technology, University of Twente, Enschede, The Netherlands

Introduction

During the past decades, fluorescence-based optical imaging progressed from microscopy and animal studies to human studies and, today, it is finally entering clinical practice in several disease areas. The imaging technology is based

⁴ Department of Radiology, University of Groningen, University Medical Centre Groningen, Groningen, The Netherlands

⁵ Department of Medical Microbiology, University of Groningen, University Medical Centre Groningen, Groningen, The Netherlands

⁶ Department of Diagnostic Sciences, Ghent University Faculty of Medicine and Health Sciences, Gent, Belgium

⁷ AxelaRx/TRACER Europe BV, Groningen, The Netherlands

⁸ Department of Clinical Pharmacy and Pharmacology, University of Groningen, University Medical Centre of Groningen, Groningen, The Netherlands

on electromagnetic radiation in the range of energies that correspond to the ultraviolet–visible–near infrared (NIR) spectrum of light [1–4]. This distinguishes optical, or more specifically defined in this review as fluorescence imaging, from other imaging techniques using strong magnetic fields combined with radio wave frequencies such as magnetic resonance imaging (MRI) or ionizing X-ray and gamma radiation such as planar X-ray imaging, computed tomography (CT), positron emission tomography (PET) and single photon emission computed tomography (SPECT) [5]. Optical fluorescence imaging approaches have been implemented in various biomedical and clinical applications, including microscopy, endoscopy and image-guided surgery [1, 2]. Detection systems used for optical fluorescence imaging are relatively inexpensive and portable, compared to other imaging modalities. This, in combination with the minimally invasive character of optical fluorescence imaging, renders it a highly promising diagnostic bedside technique [1]. The main current limitation of optical fluorescence imaging stems from the opacity of the human body for the visible light and the resulting limited light penetration depth. The use of NIR fluorophores and dyes as optical fluorescence imaging labels can provide at least a partial solution to overcome the depth penetration limitation since they fluoresce at wavelengths which exhibit the least absorption of light by haemoglobin, the most abundant light absorber in the human body, and show diminished scattering. This combined with the lowest presence of autofluorescence results in depth penetration of light in the range of centimetres through soft tissues [6, 7].

Just like nuclear imaging techniques, fluorescent imaging enables visualization of biological processes through the use of targeted or non-targeted tracers. Non-targeted tracers can accumulate passively in for example tumorous processes or aid in visualizing tissue perfusion [8–10]. Currently, there is ample experience with non-targeted tracers, such as indocyanine green (ICG) [11]. For example, ICG recently demonstrated exceptional results in imaging of metastasis of sarcomas and pancreatic and lung cancer [12–14]. Additionally, the detection of target tissue autofluorescence and spectroscopic imaging methods are gaining terrain. The advantage of the latter methods is that the respective tracers do not need to be registered or approved [15, 16]. Nonetheless, the demand for increased specificity has resulted in a shift towards the development of targeted fluorescent tracers [17]. These targeted tracers are composed of a carrier molecule (e.g. an antibody, peptide or small molecule) with a fluorescent probe attached to it, directed at a specific disease biomarker [18]. Clinical translation of targeted and non-targeted fluorescent imaging is often challenged by chemical properties of the dye and therefore also its photophysical properties, tracer conjugation difficulties,

tracer synthesis steps, toxicology and ultimately pharmacodynamics and pharmacokinetics in vivo. Hence, a multidisciplinary research team including chemists, pharmacists, engineers and clinicians is a prerequisite for the development of successful optical fluorescence imaging agents for clinical applications [19–22].

To provide a comprehensive overview of the current state of the field and to identify the potential pitfalls for targeted fluorescence imaging, we have assembled the present meta-narrative review. This review is enriched with possible directions for the future development of clinical fluorescence imaging towards bedside implementation of this technique. With this review, we ultimately aim to inspire readers to further explore and expand the clinical translation of optical fluorescence imaging techniques to the benefit of patients suffering from oncological, cardiovascular, infectious and inflammatory diseases.

Background of optical imaging techniques

The first reference to fluorescence dates back to 1845, when John Herschel reported the blue colouration of tonic water, a quinine solution, under UV light [23]. Subsequently, in 1852, the term “fluorescence” was coined [24]. The phenomenon of fluorescence became widely applicable after fluorescent probes or fluorophores were introduced to study molecular processes [25]. Since then, multiple optical techniques have emerged, especially in the second half of the twentieth century. In particular, fluorescein and ICG have become widely known for their in vivo applications. Fluorescein is used in ophthalmology and ICG is used to visualize and quantify blood flow, in, for example liver and biliary anatomy and evaluation of skin-flap viability [11, 26].

Fluorophores are molecules that absorb photons, which trigger an excited state of the fluorophore’s electrons. After losing a part of their energy in the process of vibrational relaxation, the molecule’s electrons fall back to the ground state by emitting a photon of a lower energy and thus a longer wavelength. This difference in energies between the energies of absorbed and emitted light is called the Stokes shift [24]. Depending on the wavelength of the emitted light, it is either visible by the human eye (380–700 nm) or detectable by (near) infrared cameras (> 700 nm) in the so-called near-infrared fluorescence (NIRF) imaging. Repeated excitation of fluorophores is possible, as the molecules relax from their excited state to their ground state in the span of nanoseconds, rendering them again readily available for photon absorption (Fig. 1) [27]. The principle of NIRF imaging is also applicable to endomicroscopy through integrating light sources and cameras in endoscopes [28].

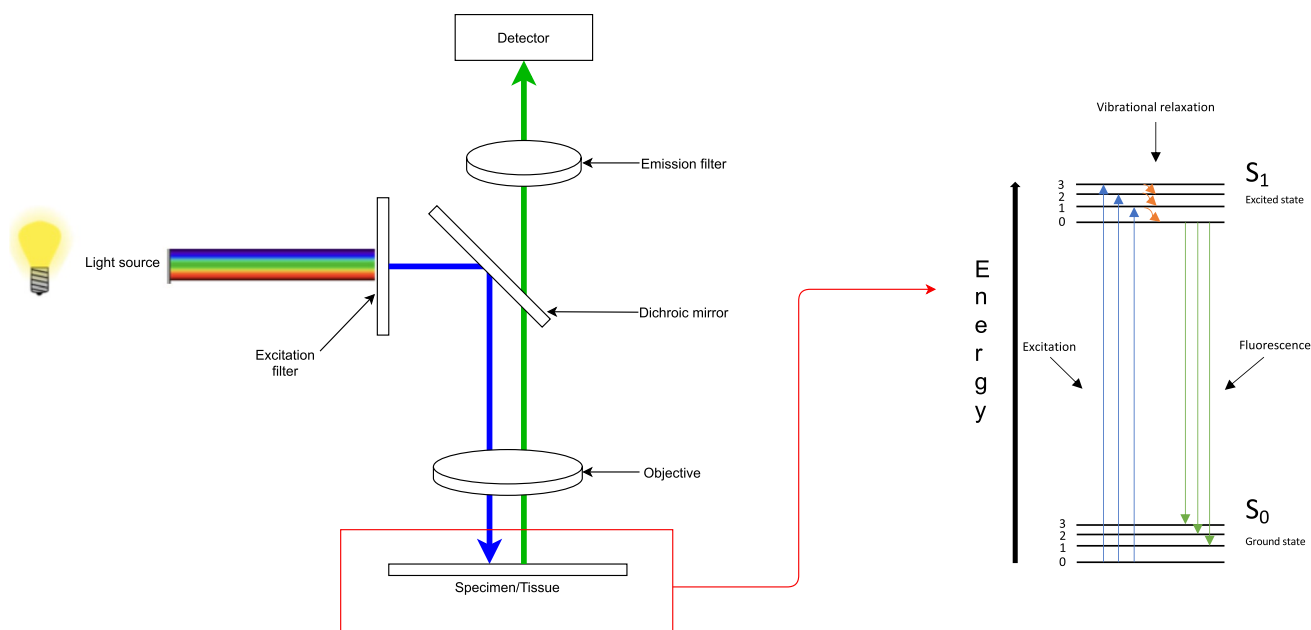


Fig. 1 Representation of the concept of fluorescent imaging. Light from a light source, filtered by an excitation filter is deflected by a dichroic mirror before it hits the (tissue) specimen. Consequently, fluorophores in the specimen absorb photons, which results in promotion to an excited state. After losing a part of their energy in the pro-

cess of vibrational relaxation, the molecule falls back to the ground state by emitting a photon of a lower energy and a longer wavelength. The emitted signal passes through an objective and an emission filter before it hits a detector

A different approach to optical fluorescence imaging is the so-called photoacoustic molecular imaging (PAMI), of which multispectral optoacoustic tomography (MSOT) is a subtype. It relies on the light-induced excitation of a dye molecule, similar to what happens in fluorescence optical imaging. However, a photoacoustic imaging dye returns to the ground state through a thermal relaxation process, which leads to local heating of the tissue and concurrent thermoelastic expansion. In turn, this expansion produces acoustic waves that can be detected using an ultrasound transducer [29, 30].

The technical backgrounds of NIRF, fluorescence endomicroscopy and PAMI/MSOT are summarized in Table 1. Examples of imaging equipment are presented in Fig. 2.

Fluorophores and dyes thus allow for real-time visualization of structures, both macro- and microscopically. Additionally, the development of specific cross-linking techniques for the fluorescent labelling of proteins, antibodies and small molecules has strongly improved the specificity of tracers towards targeting tissues in for example receptor targeting [18]. In fact, multiple fluorophores may be utilized simultaneously in one and the same clinical application by combining molecules with different excitation and emission

spectra, as was recently described in research regarding penile cancer where a Cy5 tracer targeting the MET receptor was simultaneously used with ICG [36].

Methods

Study design and search strategy

To provide an overview of the currently available targeted optical agents and their (potential) clinical implementation, a meta-narrative approach was chosen [37]. Furthermore, this paper was structured following the RAMESES (Realist And Meta-narrative Evidence Syntheses: Evolving Standards) publication standards [38]. A systematic search was performed using the PubMed database. Three distinct searches were performed with keywords related to “Optical fluorescence imaging” as constant (see Supplement 1 for further information).

Inclusion criteria and selection process

Original human clinical studies that investigated a targeted optical tracer in the field of oncologic,

Table 1 Overview of utilized optical fluorescence imaging techniques and investigated fluorophores as described by the included articles

Imaging technique	Description technique	Abbreviation
Near-infrared fluorescence imaging	Sensitive cameras detect fluorescent signals in the target tissue and construct 2D images, both in and ex vivo. These signals can be enhanced by the administration of fluorophores	NIRF imaging
Multispectral optoacoustic tomography	Delivers short laser pulses to target tissue and/or fluorophores, producing heat and thereby expanding the target tissue, giving rise to ultrasound waves. These signals can be converted to 3D images	MSOT
Optical endomicroscopy	Enables imaging of tissue histology in situ, allowing for cross-sectional images on the micron scale through the use of endoscopes, catheters, laparoscopes and needles	OEM
Fluorophore/probe	Excitation wavelength (nm)	Emission wavelength (nm)
BM104	680–685	700–710
Cy5.5	650–683	700–720
Fluorescein (Isothiocyanate)	475–490	510–520
ICG	740–800	800–860
IRDye800CW	770–780	790–798
NBD	460–480	520–550
S0456	774–776	794–796
ZW800-1	710–806	780–900
MMPsense680	670–690	690–710

cardiovascular, infectious and inflammatory diseases were included in this review. All publications that did not meet these requirements were excluded. Furthermore, all non-English publications, papers without complete abstracts and unobtainable paper copies were also excluded (Fig. 3).

Because of the large number of resulting works, titles and abstracts were screened and assessed for eligibility using the artificial intelligence program ASReview version v0.16 [39]. This software is based on machine learning algorithms that includes active learning and interaction with the researcher. It minimizes human error during the screening process and, consequently, increases the screening efficiency [39, 40]. Inter-rater reliability was established by two independent researchers. We calculated an inter-rater reliability of 97%. Furthermore, the guideline produced by ASReview was followed to screen an additional 25% of the total number of search results after the last relevant marked article, to minimize the risk of missing additional relevant articles [40].

The relevant articles screened with ASReview were read in full text. References of articles were also scanned and the duplicates were removed. An overview of the literature selection process is presented in Fig. 3. The final eligible articles were organized using Mendeley's reference management software [41].

Data extraction and analysis

All relevant journal metadata were extracted from the included papers (Table 2). The latter were grouped by investigated disease type and investigated optical tracer.

Fields of interest were assigned to a developmental stage based on the combined data per field of interest, study design (e.g. ex vivo, in vivo, both), analysis (e.g. sensitivity and specificity) and clinical decision-making (e.g. alteration of (surgical) treatment plan). In this process, four different stages of maturity emerged: stage I, beginning stage (feasibility studies); stage II, not yet developed (dose-escalation studies); stage III, developed (sensitivity and specificity studies); and stage IV, mature, standard of care (Fig. 4).

Results

Selected articles and study characteristics

The search produced 6261 peer-reviewed articles, related to targeted and non-targeted optical fluorescence imaging, to be screened with ASReview: 5853 involved oncological disease, 449 cardiovascular disease and 336 infectious and inflammatory diseases. Finally, 54, 6 and 2, of the respective papers met the inclusion criteria (see Table 2 for an

overview of the included studies and Fig. 3 for the selection process). The high exclusion percentage is explained by the large amount of non-targeted optical imaging studies and animal studies.

In the following paragraphs, results are summarized based on pathologies within the major clinical domains and the optical imaging methodologies applied. Each paragraph concludes with the assigned developmental stage.

Optical fluorescence imaging in oncology

Head and neck oncology

The therapeutic antibodies panitumumab and cetuximab, targeted against Epidermal Growth Factor Receptor (EGFR), are used for the treatment of head neck squamous cell carcinoma (HNSCC). Their high specificity for EGFR makes them ideal candidates for targeted optical fluorescence imaging. Cetuximab, conjugated to the GMP-produced NIR fluorescent dye NHS-IRDye800CW (800CW) (Table 1), has been used for precise peri-operative identification of tumour tissue during surgery, back-table imaging and for combining standard histopathology with in vivo fluorescence immunohistochemistry [42, 43]. Compared to the gold standard of histological assessment, fluorescence-guided pathology showed a sensitivity and specificity of 91.0% and 85.0%, respectively [44]. In a later phase, intraoperative fluorescence imaging using cetuximab-800CW was able to identify tumour-positive and -negative lymph nodes with a sensitivity and specificity of 97.2% and 92.7%, respectively. Fluorescence imaging reliably detected cancer and altered tumour staging in 8.1% of lymph nodes that were considered false positive by histopathology. Furthermore, a pre-operative unlabelled dose of cetuximab showed significant improvement of intraoperative performance. This was likely due to increased off-target receptor occupancy by the unlabelled cetuximab, resulting in higher tumour uptake, an effect which is also seen in radioimmunotherapy [45–47].

Similar studies targeting EGFR have been performed with panitumumab-800CW. Several clinical studies showed around 89% sensitivity and a negative predictive value (NPV) > 90% during surgical specimen tumour mapping. Similarly, panitumumab has aided in tumour detection and ex vivo mapping of margins with a sensitivity of 95%, making it a potential valuable margin-evaluation tool to accelerate intraoperative decision-making by the attending surgeon. Furthermore, panitumumab-800CW allowed distinction between low-grade and high-grade dysplasia in fluorescence histopathology [48–51]. Additionally, ex vivo optical fluorescent specimen imaging with panitumumab-800CW was proposed to reduce sampling errors in tissue selection for frozen section analysis and facilitated the surgeon's orientation to which areas needed to be sampled [52].

Panitumumab-800CW enhanced the workflow by allowing the discrimination of metastatic and benign lymph nodes, resulting in a 90% reduction of lymph nodes that have to be pathologically and histologically examined [53, 54]. Furthermore, it was shown that pre-operative contrast-enhanced MRI is capable of predicting intra-tumoral distribution and accumulation of panitumumab-800CW and can therefore assist in selection of patients suitable for intraoperative optical fluorescent imaging with panitumumab-800CW [55].

Recently, PAMI after administration of panitumumab-800CW appeared to have the potential to improve the diagnosis of lymph node metastasis by providing enhanced imaging resolution at an increased depth in human ex vivo neck specimens from HNSCC patients [56].

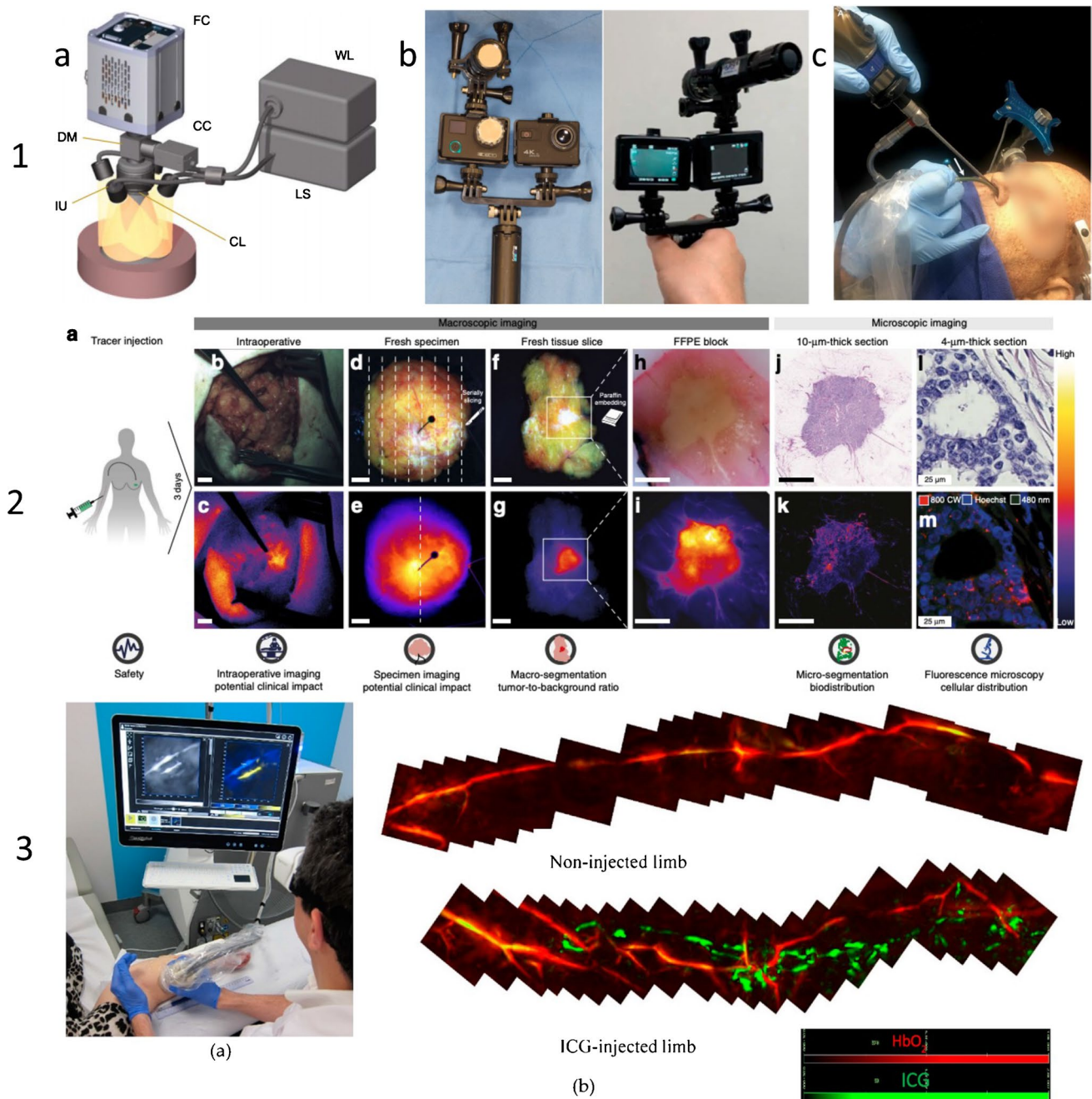
Another novel technique is smart-activated optical fluorescent imaging. In summary, a fluorescent-silent (i.e. quenched) tracer is administered topically or systemically, and activation by a biological disease results in an unquenched state of the fluorophore, and thus, the tracer is in its “on” state and able to be excited resulting in subsequent emission of light [57]. ONM-100 is a smart activatable pH-sensitive amphiphilic polymer nanoparticle or micelle, consisting of multiple quenched ICG molecules within the particle (Table 1). These micelles, tuned for a pre-defined pH setpoint, rapidly disintegrate in an acidic tumour environment, creating un-quenching of the ICG molecules and thus a fluorescent signal upon excitation. In a recently published phase I clinical study, ONM-100 allowed the detection of tumour-positive resection margins intraoperatively, as well as ex vivo, with a sensitivity and specificity of 100% and 57% respectively [58].

Since targeted optical fluorescence imaging in head and neck cancer facilitates workflow optimization and, in some instances improved tumour staging, this field was classified as presently in end-stage III (Fig. 4).

Gastrointestinal oncology

Bevacizumab conjugated to NHS-IRDye800CW targets the soluble ligand of vascular endothelial growth factor A (VEGF-A). In peritoneal carcinomatosis of colorectal origin, imaging with bevacizumab-800CW was able to reveal additional histologically confirmed tumour tissue, which was initially not detected by oncological surgeons by visual and manual inspection alone. Eight out of 79 samples were false-negative lesions and no false positives were reported, as confirmed by final histological analysis [59]. Furthermore, bevacizumab-800CW-guided fluorescence endoscopy and back-table margin imaging in patients with locally advanced rectal cancer showed a higher sensitivity, specificity and accuracy compared to MRI [60, 61].

Fluorescence endoscopy with the same tracer in Barrett's oesophagus and familial adenomatous polyposis (FAP)



patients resulted in sufficient tumour-to-background ratios (TBRs) for lesions smaller than 3 mm. Furthermore, fluorescence imaging identified additional lesions missed by simple white-light imaging. This suggests that fluorescence endoscopy can aid in early diagnosis of (pre)malignant tissue [62, 63]. Additionally, fluorescence endoscopy imaging with a small peptide conjugated to a Cy5 fluorescent dye (EMI-137), targeting the c-Met receptor, was investigated in vivo in Barrett's oesophagus patients. Here, a 100% sensitivity was reached. Histologically, three additional lesions identified with white-light endoscopy displayed a low expression

of c-Met and were therefore not detected by fluorescence imaging [64].

In pancreatic cancer patients, with tumours known for impermeable tissue characteristics as a result of the inflammatory desmoplastic tissue reaction, both panitumumab-800CW and cetuximab-800CW have been investigated [65]. A feasibility study with panitumumab-800CW demonstrated that it was possible to visualize primary tumours, lymph node metastasis and small (<2 mm) peritoneal metastasis, despite the size of the antibody-fluorescent dye conjugate of ~150 kD which might hamper tissue-specific targeting

Fig. 2 1a Typical composite camera system using a highly sensitive fluorescence camera (FC) to collect fluorescence images and a colour camera (CC) to collect white-light images through a dichroic mirror (DM) and a common lens (CL). Different light sources may be used for white-light excitation (WL) and fluorescence excitation using a laser source (LS) and common illumination unit (IU). Reprinted by permission from Springer Nature Customer Service Centre GmbH, Springer Nature, Nature Photonics, Tackling standardization in fluorescence molecular imaging, Koch et al. [31] Copyright (2018). 1b Front and back of ICG-NIRF prototype modified action camera with 7.2-mm lens, modified action camera with 7.2-mm lens and bandpass filter and modified LED light with bandpass filter. Reproduced from Yang et al. [32] J. Clin. Med. Copyright 2021 MDPI, Basel, Switzerland. 1c Position of confocal laser endomicroscopy (CLE) scanning probe in an endonasal transsphenoidal approach (arrow points to the CLE probe). Reproduced from Belykh et al. [33] J. Clin. Med. Copyright 2020 MDPI, Basel, Switzerland. 2a Intravenous administration of bevacizumab-800CW 3 days prior to surgery. 2b, c Colour image and corresponding fluorescence image obtained in vivo during surgery to determine potential clinical value. 2d, e Imaging of the fresh surgical specimen, followed by serially slicing. 2f, g Imaging of the fresh tissue slices to determine tumour-to-background ratio based on macro-segmentation, followed by paraffin embedding. 2h, i Imaging of formalin-fixed paraffin-embedded (FFPE) blocks to determine heterogeneity of tracer uptake within a tumour. 2j, k Imaging of 10- μ m-thick tissue sections for microsegmentation to reveal microscopic biodistribution and correlation with fluorescence signals from the macroscopic to microscopic level. 2l,m Fluorescence microscopy to determine tracer distribution on a cellular level. Scale bars represent 1 cm, in l, m the scale bar represents 25 μ m. Reproduced from Koller et al. [34] Nature Communications Copyright 2018, Springer Nature. 3a Bedside multispectral optoacoustic tomography (MSOT) examination. 3b In the ICG injected limb both lymphatic (green) and blood vessels (red) were detected while in the non-injected limb, only blood vessels (red) could be detected. Reproduced from Giacalone et al. [35] J. Clin. Med. Copyright [2020], MDPI, Basel, Switzerland

due to the aforementioned desmoplastic reaction. For primary tumour detection, panitumumab-800CW showed a 90.3% sensitivity and 74.5% specificity, compared to immunohistochemistry stains, while cetuximab-800CW showed 96.1% sensitivity and a 67.0% specificity [66, 67]. Pancreatic cancer was also visualized with SGM-101, an antibody specific for the carcinoembryonic antigen (CEA) labelled with fluorescent BM104 (Table 1). Two clinical studies showed that both the primary tumour and metastatic lesions could be visualized with 89% accuracy [68, 69].

SGM-101 was also evaluated in patients with primary colorectal cancer (CRC) and, if present, its peritoneal metastases. Imaging of fluorescent and suspected lesions resulted in 98% sensitivity and 62% specificity. Intraoperative imaging altered care in 24–34% of patients. Lastly, 44% of the histologically proven malignant lesions were only identified with fluorescence imaging and missed by clinical assessment through routine visual and manual inspection [70–72]. One study investigated the hybrid tracer ^{111}In and 800CW-labelled CEA-targeting antibody labetuzumab (^{111}In -DOTA-hMN-14-800CW). Ex vivo incubation of CRC lesions showed a fivefold increase in median fluorescent and

autoradiography intensities as compared to surrounding tissue. Deeper tissue sections demonstrated less tracer uptake, potentially missing deeper seated target tissue in vivo [73]. The fluorescently labelled peptide cRGD-ZW800-1 (Table 1) was further investigated in targeting a variety of integrins in CRC patients and healthy volunteers. In the latter group, healing wounds showed fluorescence caused by cRGD-ZW800-1, which could potentially lead to overtreatment when translated to intraoperative decision-making [74].

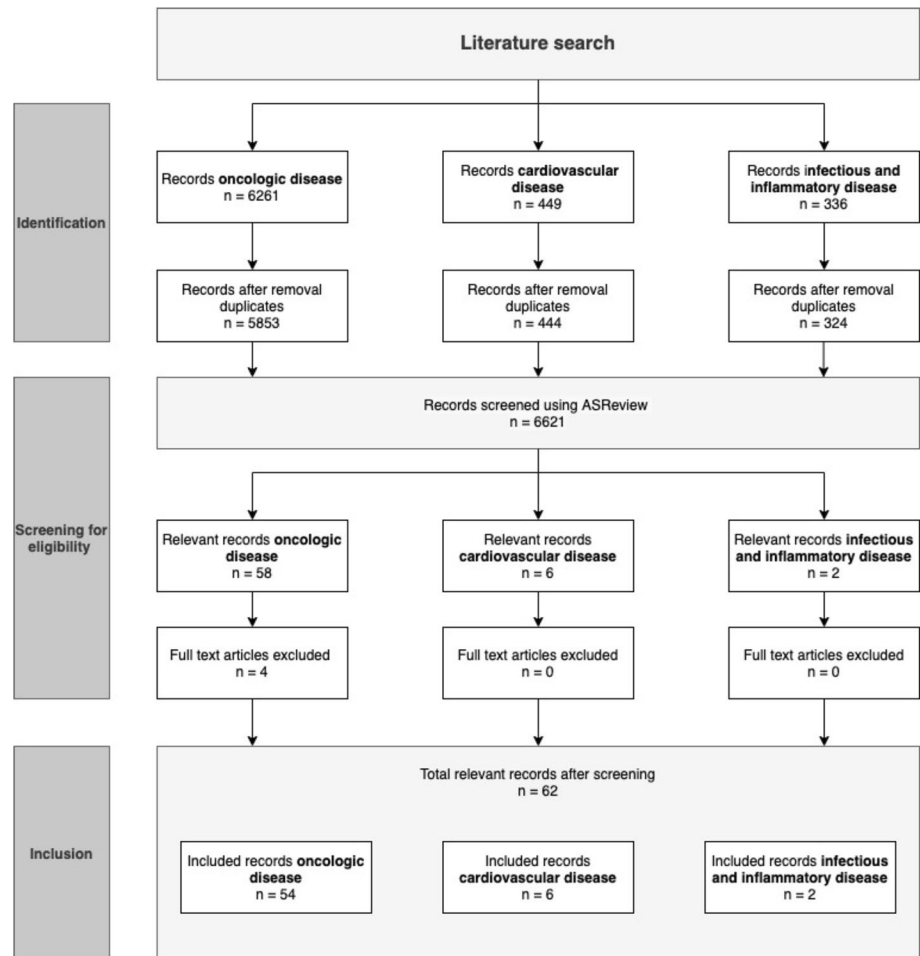
In gastric cancer patients, the NIR tracer OTL38 (folate conjugated to the fluorophore S0456) (Table 1) was investigated as a tracer targeting folate receptor- α overexpression in gastric cancer. Intraoperatively, fluorescence imaging could be detected extraluminally through the stomach wall. Clinically suspect lesions that did not display fluorescence were sampled and showed indeed benign polyps and benign liver tissue [75].

Furthermore, several ongoing trials are pending on the abovementioned tracers bevacizumab-800CW, cetuximab-800CW and SGM-101 (for example NCT03620292, NCT04638036 and NCT04642924). Lastly, the novel tracer vedolizumab-800CW is being studied in IBD patients to predict the treatment response and to elucidate the targeting agent's mechanism of action (NCT04112212).

Altogether, multiple studies demonstrated that the surgical plan was altered or could have been altered intraoperatively, which emphasizes the added value of clinical fluorescence imaging and the potential of fluorescence-guided surgery. For this reason, optical fluorescence imaging in gastrointestinal cancers has reached stage III and is moving towards clinical implementation (Fig. 4).

Breast and gynaecological oncology

In vivo targeting of primary breast cancer was performed with 4.5 mg bevacizumab-800CW (Table 1) administered intravenously. Back-table fluorescence imaging showed positive margins in histologically proven tumours. Ex vivo analysis demonstrated significantly higher mean fluorescence intensities of malignant tissue than surrounding normal tissue. Nevertheless, the fluorescence intensities were too low to be detected intraoperatively [76]. Another study investigating bevacizumab-800CW aimed to evaluate a standardized analysis of fluorescence images after in vivo tracer administration, called fSTREAM, based on colour images, fluorescence images, haematoxylin and eosin (H/E) microscopy slices and the pathologist's demarcation border between malignant and normal tissue. Fluorescent signal intensity was related to tumour aggressiveness as proven by histology, resulting in 98% sensitivity and 79% specificity. fSTREAM has the capacity to guide a normalized threshold for fluorescence intensity and thus to distinguish

Fig. 3 Flow diagram of literature search

between malignant and normal tissue. However, thresholds can differ between different tumour types and tracers [77]. Furthermore, an 88% increase in intraoperative detection rate of malignant tissue was demonstrated by retrospective histology as compared to intraoperative fluorescence signals in a 25 mg bevacizumab-800CW group [34]. Furthermore, in and ex vivo targeting was performed with the protease activatable fluorescent agent LUM015 to assess the cavity wall intraoperatively for residual tumour. The results were correlated with the histopathology of excised specimens. A total of 45 patients undergoing surgery were included for invasive ductal, lobular cancers and intraductal cancers. The sensitivity for tumour detection was 84% among all imaged surfaces and 100% sensitivity in the final cavity margin. Thus, 2 out of 8 patients (25%), with positive margins after surgery, were spared a second surgery, because additional tissue was excised at the place where a signal of LUM015 was detected [78]. Overall, it can be concluded that optical fluorescence imaging is a promising technique in the demarcation of breast cancer, which is further supported by a study that investigated a standardized analysis protocol, enhancing its potential clinical use. Because most study designs were

based on dose escalation and only one calculated sensitivity and specificity, the current status of this subspeciality was deemed as stage II, with an outlook towards stage III (Fig. 4).

Gynaecological cancers were investigated with folate-FITC, which was in fact the first-in-human trial worldwide using a targeted fluorescent tracer, and OTL38 (Table 1), targeting the folate receptor alpha (FR α). In ovarian cancer patients, a dose of 0.3 mg/kg folate-FITC intravenously resulted in clear fluorescent signals, whereas no signals were observed in a patient with malignant tumour without FR α expression and in all benign tumours [79]. Metastases as small as < 1 mm were correctly identified with folate-FITC, and the number of detected tumour deposits increased significantly when fluorescence imaging was used by the surgeons (median 34 with fluorescence imaging compared to median 7 only white light) [80]. Furthermore, an optimal dose of 0.0125 mg/kg of OTL38 was determined in ovarian cancer patients, reaching 29% additional detection of malignant lesions. Fluorescence could be seen up to 1 cm beneath the tissue surface, allowing for increased malignant tissue detection as compared to white light [80].

Table 2 Overview included articles per general category

Application	First author	Month and year of publication	Journal	Medical condition	Sample size	Ex vivo or in vivo	Imaging technique	Target agent (TA)	Category TA	Fluorophore	Targeting agent
Oncologic disease	Steinkamp, <i>et al.</i>	March 2021	Journal of Nuclear Medicine	Soft-tissue sarcoma	15	Ex and in vivo	NIRF	Bevacizumab	Antibody	IRDye800-CW	Bevacizumab-800CW
	Valk, de, <i>et al.</i>	March 2021	Annals of Surgical Oncology	Colorectal cancer	37	In vivo	NIRF	Chimeric monoclonal antibody against carcinoembryonic antigen	Antibody	BM104	SGM-101
	Dijkstra, <i>et al.</i>	March 2021	Journal of Neuro-Oncology	Meningioma	10	Ex vivo	NIRF	Somatostatin analogue	Small molecule	IRDye800-CW	800CW-TATE
	Newton, <i>et al.</i>	February 2021	Molecular Imaging and Biology	Gastric cancer	5	In and ex vivo	NIRF	Folate analogue	Small molecule	S0456	OTL38
	Voskuil, <i>et al.</i>	November 2020	Nature communications	Various cancers	30	In-vivo	NIRF	pH-activatable nanoparticle	Nanoparticle	ICG	ONM-100
	Jongh, de, <i>et al.</i>	October 2020	Journal of Nuclear Medicine	Rectal cancer	25	Ex vivo	NIRF	Bevacizumab	Antibody	IRDye800-CW	Bevacizumab-800CW
	Nishio, <i>et al.</i>	October 2020	Journal of Nuclear Medicine	Head and neck cancer	53	Ex vivo	NIRF	Panitumumab	Antibody	IRDye800-CW	Panitumumab-800CW
	Lu, <i>et al.</i>	August 2020	Lancet Gastroenterology & Hepatology	Pancreatic cancer	11	Ex and in vivo	NIRF	Panitumumab	Antibody	IRDye800-CW	Panitumumab-800CW
	Lu, <i>et al.</i>	June 2020	Clinical Cancer Research	Head and neck cancer	24	Ex vivo	NIRF	Panitumumab	Antibody	IRDye800-CW	Panitumumab-800CW
	Elekonawo, <i>et al.</i>	April 2020	Cancers	Peritoneal metastasized colorectal cancer	10	Ex vivo	NIRF	Anti-carcinoembryonic antigen (CEA) antibody	Antibody	DOTA, IRDye800-CW	¹¹¹ In-DOTA-hMN-14-IRDye800CW
	Nishio, <i>et al.</i>	February 2020	Molecular imaging and biology	Head and neck cancer	24	Ex vivo	NIRF	Panitumumab	Antibody	IRDye800-CW	Panitumumab-800CW
	Smith, <i>et al.</i>	January 2020	Annals of surgical oncology	Breast cancer	45	In vivo	NIRF	Cysteine cathepsin-activatable probe	Peptide	Cy5	Lum015
	Valk, de, <i>et al.</i>	August 2020	Clinical cancer research	Colon cancer	11	In vivo	NIRF	cRGD	Peptide	ZW-800-1	cRGD-ZW800-1
	Jongh, de, <i>et al.</i>	April 2020	Theranostics	Oesophageal cancer	5	In vivo	NIRF	C-Met targeting peptide	Peptide	Cy5	EMI-137
	Meijer, <i>et al.</i>	March 2020	European journal of surgical oncology	liver metastases	11	In vivo	NIRF	Chimeric monoclonal antibody against carcinoembryonic antigen	Antibody	BM104	SGM-101
Application	First author	Month and year of publication	Journal	Medical condition	Sample size	Ex vivo or in vivo	Imaging technique	Target agent (TA)	Category TA	Fluorophore	Targeting agent
	Schaap, <i>et al.</i>	March 2020	The British journal of surgery	Peritoneal metastasized colorectal cancer	14	In vivo	NIRF	Anti-carcinoembryonic antigen (CEA) antibody	Antibody	BM104	SGM-101
	Fakurnejad, <i>et al.</i>	January 2020	Frontiers in oncology	Oral cancer	29	Ex vivo	NIRF	Panitumumab	Antibody	IRDye800-CW	Panitumumab-800CW
	Nishio, <i>et al.</i>	November 2019	Nature communications	Head and neck cancer	30	In and ex vivo	NIRF	Panitumumab	Antibody	IRDye800-CW	Panitumumab-800CW
	Patil, <i>et al.</i>	October 2019	Neurosurgery	Brain cancer	17	In and ex vivo	NIRF	Chlorotoxin	Peptide	ICG	Tozuleristide
	Fakurnejad, <i>et al.</i>	October 2019	Oral oncology	Head and neck cancer	11	Ex vivo	NIRF	Panitumumab	Antibody	IRDye800-CW	Panitumumab-800CW
	Keulen, van, <i>et al.</i>	August 2019	Clinical cancer research	Head and neck cancer	12	Ex vivo	NIRF	Panitumumab	Antibody	IRDye800-CW	Panitumumab-800CW
	Keulen, van, <i>et al.</i>	January 2019	Oral oncology	Oral cancer	8	Ex vivo	NIRF	Panitumumab	Antibody	IRDye800-CW	Panitumumab-800CW
	Cho, <i>et al.</i>	January 2019	Operative neurosurgery	Pituitary adenoma	14	In vivo	NIRF	Folate analogue	Small molecule	S0456	OTL38
	Cho, <i>et al.</i>	December 2019	Journal of neurosurgery	Pituitary adenoma	39	In and ex vivo	NIRF	Folate analogue	Small molecule	S0456	OTL38
	Hoogstins, <i>et al.</i>	October 2018	Annals of surgical oncology	Pancreatic cancer	12	In and ex vivo	NIRF	chimeric monoclonal antibody against carcinoembryonic antigen	Antibody	BM104	SGM-101
	Koller, <i>et al.</i>	September 2018	Nature Communications	Breast cancer	26	In vivo	NIRF	Bevacizumab	Antibody	IRDye800-CW	Bevacizumab-800CW
	Gao, <i>et al.</i>	September 2018	Cancer research	Head and neck cancer	21	In and ex vivo	NIRF	Panitumumab	Antibody	IRDye800-CW	Panitumumab-800CW
	Miller, <i>et al.</i>	August 2018	Journal of Neuro-oncology	GBM	3	In and ex vivo	NIRF	Cetuximab	Antibody	IRDye800-CW	Cetuximab-800CW
	Lee, <i>et al.</i>	August 2018	Journal of neurosurgery	Pituitary adenoma	19	In vivo	NIRF	Folate analogue	Small molecule	S0456	OTL38
	Tummers, <i>et al.</i>	July 2018	Annals of surgical oncology	Pancreatic cancer	7	In and ex vivo	NIRF	Cetuximab	Antibody	IRDye800-CW	Cetuximab-800CW

Table 2 (continued)

Application	First author	Month and year of publication	Journal	Medical condition	Sample size	Ex vivo or in vivo	Imaging technique	Target agent (TA)	Category TA	Fluorophore	Targeting agent
	Predina, <i>et al.</i>	July 2018	Journal of thoracic oncology	Pulmonary cancer	20	In and ex vivo	NIRF	Folate analogue	Small molecule	S0456	OTL38
	Li, <i>et al.</i>	April 2018	Theranostics	GBM	14	In and ex vivo	NIRF	Bombesin	Peptide	NOTA, IRDye800-CW	⁶⁸ Ga-IRDye800CW-BBN
	Boogerd, <i>et al.</i>	March 2018	Lancet Gastroenterology & Hepatology	Colorectal cancer or recurrent or peritoneal metastases of colorectal cancer	26	In and ex vivo	NIRF	Chimeric monoclonal antibody against carcinoembryonic antigen	Antibody	BM104	SGM-101
	Predina, <i>et al.</i>	March 2018	The annals of thoracic surgery	Lung cancer	20	In and ex vivo	NIRF	Folate analogue	Small molecule	S0456	OTL38
	Hekman, <i>et al.</i>	March 2018	Theranostics	Renal cancer	15	In and ex vivo	NIRF	Girentuximab	Antibody	DOTA, IRDye800-CW	¹¹¹ In-girentuximab-IRDye800CW
	Hartmans, <i>et al.</i>	February 2018	Theranostics	Colorectal Cancer	17	In and ex vivo	NIRF	Bevacizumab	Antibody	IRDye800-CW	Bevacizumab-800CW
	Predina, <i>et al.</i>	February 2018	Oncotarget	Pulmonary cancer	12	In and ex vivo	NIRF	Folate analogue	Small molecule	S0456	OTL38
	Boogerd, <i>et al.</i>	December 2017	Oncotarget	Endometrial cancer	116	In vivo	NIRF	Folate analogue	Small molecule	S0456	OTL38
	Koch, <i>et al.</i>	November 2017	Cancer Research	Breast cancer	19	In vivo	NIRF	Bevacizumab	Antibody	IRDye800-CW	Bevacizumab-800CW
	Predina, <i>et al.</i>	September 2017	Annals of surgery	Pulmonary cancer	50	In vivo	NIRF	Folate analogue	Small molecule	S0456	OTL38
	Rosenthal, <i>et al.</i>	August 2017	Clinical cancer research	Head and neck cancer	12	Ex and in vivo	NIRF	Cetuximab	Antibody	IRDye800-CW	Cetuximab-800CW
	Moore, <i>et al.</i>	August 2017	Molecular imaging and biology	NA	6	In vivo	NIRF	Cetuximab	Antibody	IRDye800-CW	Cetuximab-800CW
	Lamberts, <i>et al.</i>	June 2017	Clinical cancer research	Breast cancer	20	Ex and in vivo	NIRF	Bevacizumab	Antibody	IRDye800-CW	Bevacizumab-800CW
	Golijanin, <i>et al.</i>	October 2016	PNAS	Urothelial carcinoma	22	Ex vivo	NIRF	pHLIP	Peptide	ICG	ICG-pHLIP
Application	First author	Month and year of publication	Journal	Medical condition	Sample size	Ex vivo or in vivo	Imaging technique	Target agent (TA)	Category TA	Fluorophore	Targeting agent
	Harlaar, <i>et al.</i>	September 2016	Lancet Gastroenterology & Hepatology	Peritoneal carcinomatosis	7	Ex and in vivo	NIRF	Bevacizumab	Antibody	IRDye800-CW	Bevacizumab-800CW
	Hekman, <i>et al.</i>	September 2016	Clinical cancer research	Renal cancer	7	Ex vivo	NIRF	Girentuximab	Antibody	DOTA, IRDye800-CW	¹¹¹ In-girentuximab-IRDye800CW
	Hoogstins, <i>et al.</i>	June 2016	Clinical cancer research	Ovarian cancer	12	In vivo	NIRF	Folate analogue	Small molecule	S0456	OTL38
	Miller, <i>et al.</i>	May 2016	Journal of clinical oncology	CNS-Tumours	32	In vivo	NIRF	Chlorotoxin	Peptide	ICG	Tozuleristide
	Warren, <i>et al.</i>	January 2016	Journal of Pathology	Head and neck cancer	3	Ex vivo	NIRF	Cetuximab	Antibody	IRDye800-CW	Cetuximab-800CW
	Kennedy, <i>et al.</i>	October 2015	Annals of surgery	Lung cancer	30	Ex vivo	Visible light fluorescence	Folate analogue	Small molecule	Fluorescein	Folate-FITC
	Okusanya, <i>et al.</i>	July 2015	The journal of thoracic and cardiovascular surgery	Lung cancer	50	In and ex vivo	NIRF	Folate analogue	Small molecule	S0456	OTL38
	Boer, de, <i>et al.</i>	June 2015	Scientific reports	Head and neck cancer	9	Ex vivo	NIRF	Cetuximab	Antibody	IRDye800-CW	Cetuximab-800CW
	Rosenthal, <i>et al.</i>	April 2015	Clinical cancer research	Head and neck cancer	12	Ex vivo	NIRF	Cetuximab	Antibody	IRDye800-CW	Cetuximab-800CW
	Dam, van, <i>et al.</i>	Sep 2011	Nature Medicine	Ovarian cancer	10	Ex and in vivo	Visible light fluorescence	Folic Acid	Small molecule	fluorescein	Folate-FITC
Cardiovascular disease	Steinkamp, <i>et al.</i>	July 2021	Diagnostics	Carotid atherosclerosis	5	In and ex vivo	NIRF	Bevacizumab	Antibody	IRDye800-CW	Bevacizumab-800CW
	Huisman, <i>et al.</i>	March 2021	Scientific Reports	Carotid atherosclerosis	15	Ex vivo	NIRF	Bevacizumab	Antibody	IRDye800-CW	Bevacizumab-800CW
	Jager, <i>et al.</i>	September 2015	Molecular Imaging and Biology	Carotid atherosclerosis	23	Ex vivo	NIRF	MMP-activated fluorescent probe	Peptide	MMPsense680	MMPsense™ 680
	Lam, <i>et al.</i>	September 2012	Molecular Imaging and Biology	Carotid atherosclerosis	20	Ex vivo	NIRF	scVEGF	Protein	Cy5.5	ScVEGF/Cy5.5
	Jager, <i>et al.</i>	Augustus 2012	Journal of Nuclear Medicine	Carotid atherosclerosis	20	Ex vivo	NIRF	Folic Acid	Small molecule	Fluorescein	Folate-FITC
	Razansky, <i>et al.</i>	July 2011	Molecular Imaging and Biology	Carotid atherosclerosis	NA	Ex vivo	MSOT	MMP-activated fluorescent probe	Peptide	MMPsense680	MMPsense™ 680

Table 2 (continued)

Application	First author	Month and year of publication	Journal	Medical condition	Sample size	Ex vivo or in vivo	Imaging technique	Target agent (TA)	Category TA	Fluorophore	Targeting agent
Inflammation and infectious disease	Lopez-Alvarez, et al.	November 2020	Scientific Reports	<i>Staphylococcus aureus</i> bacteraemia	17	Ex vivo	NIRF	Nuclease-activatable probe P2&3TT	Modified nucleotide	Fluorescein	P2&3TT
	Akram, et al.	October 2018	Science Translational Medicine	Respiratory infection	12	In vivo	OEM	PMX	Peptide	NBD	NBD-PMX

NBD = 7-nitrobenz-2-oxa 1,3-diazole, NIRF = Near Infrared Fluorescence, MSOT = multispectral Optoacoustic Tomography, PMX = polymyxin, GBM = Glioblastoma, Multiforme, ICG = indocyanine green, PNAS = Proceedings of the National Academy of Sciences in the United States of America, pHLP = pH low insertion peptide, cRGD = cyclic pentapeptide

OTL38 was also evaluated in endometrial cancer patients. After a 0.0125 mg/kg dose, an average sixfold increase of fluorescence in the tumours was measured. Moreover, 25 metastases were identified and excised, of which 19 were histologically proven malignant. All of these lesions exhibited fluorescent signals. One of these metastases was identified because of intraoperative fluorescence imaging, altering the surgical plan. Seventeen false-positive fluorescent lymph nodes were found, resulting in 100% sensitivity, 70% specificity and 48% positive predictive value [81]. Finally, in breast cancer, a new tracer, LS301, is used in patients undergoing partial mastectomy and sentinel lymph node biopsy for intraoperative margin assessment (NCT02807597). Optical fluorescence imaging in gynaecological cancers has already had an impact intraoperatively by altering the surgical plan in one study, and therefore, it has reached end-stage II clinical implementation (Fig. 4).

Neuro-oncology

Incomplete resection is a major problem in the transsphenoidal removal of pituitary adenomas, resulting in higher recurrence rates. Prospective cohort studies showed that a pre-operative injection of OTL38 was able to aid in the visualization of non-functional (NF) pituitary adenomas. OTL38 was able to provide 100% sensitivity and specificity in predicting resection margins

in FR α -positive NF adenomas with higher specificity compared to ICG and the surgeon's evaluation alone [82–84].

Similar to pituitary adenomas, complete resection of glioblastoma multiforme (GBM) is also challenging [85]. A feasibility study in GBM patients showed that PET and NIRF dual-modality imaging with 68 Ga-800CW-BBN targeted imaging via the gastrin-releasing peptide receptor (GRPR) achieved pre- and intraoperative imaging with excellent correlation. Compared to pathology, fluorescence-guided resection had a sensitivity and specificity of 94% and 100% respectively, resulting in a progression free survival at 6 months (PFS-6) of 80% in newly diagnosed GBM patients, compared to 46% in cases where non-targeted fluorophore precursors, like 5-ALA, were used [85]. A different study, where three patients received systemically administered cetuximab-800CW, proved feasibility of intraoperative visualization of GBM by NIRF imaging [86].

Tozuleristide (BLZ-100), a fluorescent tracer composed of a peptide derived from chlorotoxin (CTX) and ICG (Table 1), selectively binds to neoplastic tissue like glial tumours. Dose-escalation studies revealed that BLZ-100 was well tolerated and has potential to aid in resection of tumours in adult and in paediatric populations. BLZ-100 had lower autofluorescence and better tissue penetration compared to conventional fluorophore precursors such as 5-ALA [87, 88].

Fig. 4 The different fields of optical fluorescence imaging and their corresponding stages of clinical implementation

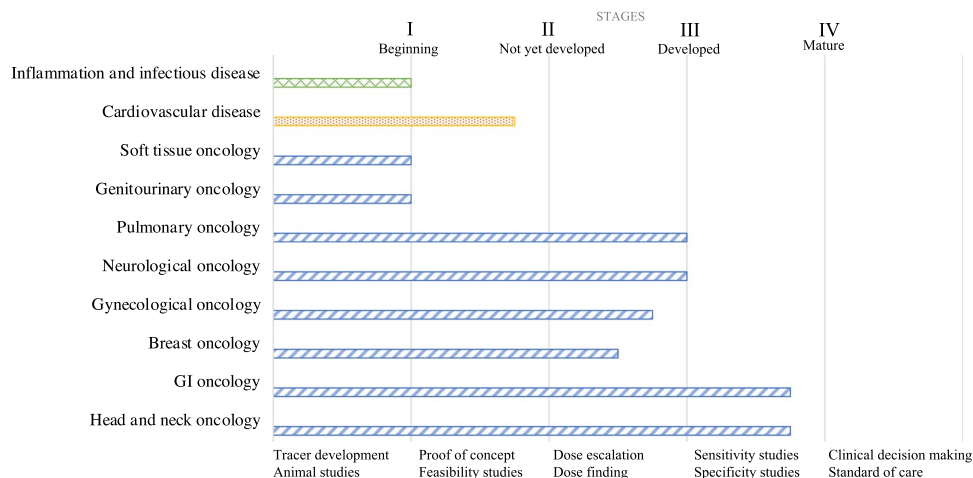


Table 3 Suggestions for future research on optical fluorescence imaging

Need	Solution
Guideline development based on large studies	Performing pivotal and statistically well-powered phase 3 clinical studies to provide more evidence of targeted optical fluorescent imaging on clinical decision-making and patient outcomes. This will support the set-up of guidelines for appropriate use
Combining optoacoustic imaging and targeted tracers	Investigate the options regarding application of optoacoustic imaging in combination with available targeted tracers for increasing the signal and more specific imaging [56]
Therapeutic fluorophore development	Designing and validating new fluorophores with properties suitable for medical purposes, e.g. appropriate size, positive effects on targeting agents and beneficial pharmacokinetic properties [113]
Combination with light-activated therapeutics	Focus on development of light-controlled therapeutic modalities, such as photodynamic therapy and photo pharmacology, and their combination with optical fluorescence imaging as a theranostic modality [124]
Multimodal tracer development	Design, synthesis and evaluation of multimodal tracers that allow combination of optical fluorescence imaging with other imaging techniques (PET/CT, SPECT, MRI, CT and ultrasound). This offers the opportunity of combined pre-operative and intraoperative imaging. This also facilitates integration of optical fluorescent imaging with already clinically established imaging modalities [73, 85, 96, 97]
“True” quantification methods	Develop standardization methods which can truly quantify and validate optical fluorescence imaging [77, 119]

A recent study evaluated Ac-Lys⁰(800CW)Tyr³-ocreoate (800CW-TATE) (Table 1), targeting somatostatin receptor subtype 2 (SSTR₂), as a potential tracer in fluorescence-guided surgery of meningiomas. Binding properties of 800CW-TATE to SSTR₂ were tested *ex vivo* on ten frozen meningioma samples. Fluorescence showed a positive trend with SSTR₂ expression and therefore facilitated in distinction between meningioma and dura mater tissue in all meningioma types [89]. Ongoing trials include the investigation of bevacizumab-800CW for intraoperative detection of pituitary neuroendocrine tumours (NCT04212793) and the intraoperative use of demeclocycline fluorescence for delineation of brain tumours (NCT02740933). Lastly, the tracer ABY-029 is used in a feasibility fluorescence imaging study of recurrent gliomas (NCT02901925).

As the majority of studies with OTL38 showed that detection of margins with high sensitivity and specificity was possible, it can be concluded that the field of targeted imaging of neuro-oncology is in stage II (Fig. 4).

Pulmonary oncology

Pulmonary adenocarcinomas, due to their high expression of FR α , can be targeted with folate-FITC or OTL38 (Table 1). Multiple initial feasibility studies showed that folate-FITC correctly identifies FR α -expressing tumours. Nevertheless, low signal penetration limited intraoperative imaging to subpleural tumours [90, 91]. Studies with the NIR FR α -targeting tracer OTL38 showed that it accumulated in all pre-operatively identified lesions. Nonetheless, no tumour deeper than 2 cm could be detected with fluorescence imaging *in situ*. Furthermore, NIR fluorescence imaging with

OTL38 identified nine additional lesions in 50 patients that were unidentified by pre-operative 18-fluorodeoxyglucose PET/CT imaging. Moreover, NIRF identified 56 out of 59 nodules identified by PET/CT. For this reason, combining optical fluorescence imaging with PET/CT may result in superior oncologic outcomes [92, 93].

The applicability of optical fluorescence imaging with OTL38 in pulmonary squamous cell carcinoma (PSSC) was also evaluated. Clinical trials with OTL38 revealed intraoperative fluorescence of nodules larger than 1.1 cm and consequently prevented conversion to thoracotomy [94]. Additionally, *in situ* or back-table NIRF localization identified 20 out of 21 ground-glass opacities (GGO's) altering care in 9 out of 20 subjects. Video-assisted thoracic surgery (VATS) located 10 out of 21 nodules, compared to the 15 out of 21 that were localized by NIRF imaging. Furthermore, margins assessed by NIRF imaging were similar to those assessed by pathology. NIRF imaging of tumours deeper than 1.5 cm from the pleural surface was still limited by impaired depth detection [95]. In this field, a trial with SGM-101 to detect lung metastases intraoperatively in colorectal cancers patients is currently being performed (NCT04737213).

Optical fluorescence imaging with OTL38 altered care for several patients, but since only a limited number of studies is performed, the field of pulmonary oncology is presently in stage III (Fig. 4).

Genitourinary oncology

Clear cell renal cell carcinomas (ccRCC) highly express carbonic anhydrase IX, targeted by girentuximab due to the overexpression of hypoxia-inducible factor-1 alpha (HIF-1 α)

as these tumours are fast growing and highly hypoxic. Dual-labelled ^{111}In -DOTA-girentuximab-800CW was investigated in ccRCC both in vivo and ex vivo in a recently published clinical feasibility study. A large variation of antibody accumulation was observed between different tumours. Furthermore, radionuclide imaging was critical for intraoperative tumour localization as overlying fat, with its inherent increased scattering properties for light, prevented accurate localization of the fluorescent signal. Ex vivo NIRF imaging did correctly identify one additional positive surgical margin [96, 97].

A pH-sensitive tracer coupled to ICG, ICGpHLIP, was studied in urothelial carcinoma. Ex vivo instillation with this tracer accurately targeted malignant lesions in the bladder with 97% sensitivity. However, ICGpHLIP also targeted necrotic and previously treated tissue, decreasing the sensitivity to 80% [98]. Both studies proved feasibility, and therefore, this subcategory of cancers is classified as stage I (Fig. 4).

Soft tissue oncology

One feasibility study investigated bevacizumab-800CW in patients diagnosed with soft tissue sarcoma. An optimal dose of 10 mg administered intravenously was established. All tumour margins of the excised specimens were correctly identified with fluorescence imaging. Solid and cellular tumour masses were all easily detected, whereas border zones with more scattered malignant tissue could not be individually identified with fluorescence. False-positive fluorescent signals were observed in areas with high macrophage content, possibly due to peri-tumoral inflammation with influx of activated macrophages or inflammation induced by neoadjuvant radiotherapy resulting in increased angiogenesis [99]. Furthermore, a phase 0 study investigated ABY-029, an affibody targeting EGFR coupled to 800CW, for the resection of sarcomas. The shorter plasma half-life of affibodies compared to antibodies allows for intravenous injection 1–3 h prior to surgery compared to days [100]. This subcategory of cancer imaging was consequently deemed as stage I regarding clinical implementation (Fig. 4).

Cardiovascular disease

We included six study reports that investigated targeted optical fluorescent imaging in carotid atherosclerosis, a highly prevalent disease which is responsible for ~25% of all ischemic stroke cases [101]. Initial incubation studies with clinical samples have been executed with smart activatable GLP-produced fluorescent tracer MMPSenseTM680. This type of tracer consists of fluorophore and quencher molecules connected by peptide or oligonucleotide linkers [57, 102]. MMPSenseTM680 emits light upon cleavage of

these linkers by proteases excreted by activated macrophages which play an important role in the pathogenesis of vulnerable plaques and as such can be imaged with fluorescence and MSOT imaging (Table 1). MSOT imaging allowed for an accurate depiction of ex vivo atherosclerotic plaque morphology and activated MMPSenseTM680 tracer localization in three dimensions with high resolution. Single-wavelength two-dimensional image reconstruction of the MSOT device took about 30 s per image, while the creation of consecutive three-dimensional (3D) images with multiple wavelengths required approximately 20 min in total [102]. A second study investigated the tracer with ex vivo NIRF imaging, demonstrating a six- to sevenfold increase in fluorescent signals compared to the measured autofluorescence [103].

Folate receptor beta (FR β), expressed by activated macrophages, was visualized ex vivo with folate-FITC and NIRF imaging [104]. A significant difference between background fluorescent signals after incubation with folate-FITC was observed, and clear hot and cold spots (i.e. areas displaying high uptake and low uptake, respectively) could be distinguished. Three studies focussed on the angiogenic pathway related to the vulnerable plaque, namely bevacizumab-800CW targeting VEGF-A (two studies) and scVEGF/Cy5.5 targeting the VEGF-receptor (one study) (Table 2) [105–107]. Bevacizumab-800CW was investigated with ex vivo NIRF imaging, showing a clear uptake in plaques retrieved from patients with recent ischemic events, whereas plaques retrieved from older ischemic events did not display strong fluorescent signals. However, no statistical analysis could be performed due to the small sample size [106]. A subsequent study investigated the utility of MSOT in five patients that received a low-intravenous dose of bevacizumab-800CW. Although the bevacizumab-800CW signal could not be detected with MSOT, in vivo and ex vivo NIRF imaging of the excised plaques correlated with histopathology [107]. Plaques incubated with scVEGF/Cy5.5 were imaged ex vivo [105]. Clear hot and cold spots could be identified; fluorescent signal measurements significantly increased in hot spots as opposed to cold spots. Total tracer binding occurred comparably in both symptomatic and asymptomatic plaques.

In summary, optical fluorescence imaging in the field of cardiovascular diseases has been investigated mainly in ex vivo proof of concept studies. No studies were included that evaluated a systemic clinical dose of an optical tracer with subsequent imaging. For this reason, this field is in end-stage I (Fig. 4).

Infectious disease

Optical fluorescence imaging can provide an alternative bedside methodology for identifying bacterial infections in situ. A study in intensive care and bronchiectasis patients utilized

optical endomicroscopy, known as confocal laser endomicroscopy (CLE) (Table 1) and topical administration of the lipid A-targeting antimicrobial peptide polymyxin labelled with the fluorescent 7-nitrobenz-2-oxa-1,3-diazole (PMX-NBD) (Table 1) to visualize pulmonary Gram-negative bacterial infections in the distal lung/alveoli. At this moment, however, the clinical implementation of this approach is limited by the lack of extensive diagnostic accuracy studies and fluorescent probes that were tested in situ or ex vivo for targeting polymicrobial or Gram-positive bacterial infections [108].

Optical fluorescence imaging can also be used to visualize infections ex vivo. P2&3TT is a smart activatable oligonucleotide-based probe that carries fluorescein amidite on the 5'-end and the ZEN and Iowa Black RQ quenchers on the 3'-end. The probe is activated upon cleavage by the *Staphylococcus aureus* (SA) micrococcal nuclease (Table 1). P2&3TT can be used for fast ex vivo detection of SA in blood cultures with a 10^4 -fold higher sensitivity compared to conventional diagnostic culturing methods. This method may assist as a complementary tool in the diagnosis of *S. aureus* bacteraemia [109].

Both of the aforementioned studies are proof of concept, and therefore, the clinical use of optical fluorescence imaging for infectious disease is currently still in stage I (Fig. 4).

Discussion

This review provides an overview of all relevant literature on the topic of clinical targeted optical fluorescent imaging with the aim to chart the latest developments in the various clinical disciplines that have started to make use of optical fluorescence imaging techniques towards routine clinical application in case of value. Especially in the field of gastroenterology and oncology (i.e. head and neck cancer), the intraoperative use of fluorescence imaging has a high proven impact on future clinical decision-making (end-stage III). Other areas of oncology are presently in stage III (pulmonary, neurological), stage II (gynaecological and breast) and stage I (soft tissue and genitourinary). Despite the fact that the development of optical fluorescence imaging in cardiovascular (end-stage I) and infectious diseases (stage I) is still less advanced, the concept is gaining momentum in these specialties as well, promoting the potential broad clinical implementation of this imaging approach.

So far, the most mature areas concern the targeted optical fluorescent imaging of GI-tract and head and neck oncology (end-stage III). The reason for this resides presumably in their readily accessible location for imaging with white light. In the fields of cardiovascular and infectious diseases, feasibility studies still dominate. However, it is anticipated that in both fields, further development will depend on the expansion of investigated clinical applications. With respect

to infectious disease, for example, extensive pre-clinical and post-mortem studies that utilize the targeted vancomycin-IRDye800CW conjugate have already been conducted [110, 111]. These studies are likely to open up new clinical possibilities for targeting Gram-positive bacterial infections in the near future once this tracer is GMP produced and evaluated in phase I/II clinical safety/feasibility studies.

While a variety of fluorescent optical antibody- or small molecule-based, smart activatable and pH-based tracers have been applied to date, we noticed that only a limited repertoire of fluorescent labels is currently in use. The IRDye800CW, which was mostly used for labelling antibodies, and S0456 (bound to OTL38) account for approximately 75% of the applications of the investigated fluorophores. Relatively new are dual-labelled tracers (i.e. nuclear and fluorescent), pH-based and smart activatable tracers, which increase the utility of fluorescent imaging. Furthermore, the evolution of total body PET/CT may instigate significant changes in the need for fluorescent compounds, as the radiation burden will be lower while PET-detection sensitivity has increased and follow-up times for treatment response measures may increase [112]. Dual-labelled probes contain a mixture of both radioactive and fluorescent labels, facilitating pre-operative (deep) target tissue visualization with conventional techniques, such as PET/CT, and intraoperative visualization with NIRF imaging [85, 96, 97]. Novel pH-based tracers, such as ONM-100 and ICG-pHLIP, which are activated in acidic conditions, may help to circumvent the need for specific receptor or antigen expression [58, 98]. Previous research has also shown the feasibility of such pH-responsive tracers in cancer treatment as opposed to only tumour visualization, which further highlights the versatility of such tracers in a theranostic approach [113].

Two types of activatable or “smart” probes were described in this work: MMPsenseTM680 and P2&3TT. Activation occurs through cleavage of the peptide/oligonucleotide linkers by specific enzymes, which will separate the fluorophore from the quencher. Consequently, the probe is switched “on” and emits a fluorescent signal. This mode of action is promising for future research and clinical implementation, as it allows for increased contrast and sensitivity for specific molecular targets and, additionally, it minimizes background signals compared to tracers that have an always “on” state [57].

Today, optical fluorescent imaging in general is mainly limited by the low tissue penetration of fluorescent signals. The fluorescent light emitted by NIRF agents has a somewhat better tissue penetration, but the problem persists for deeper situated or covered target tissue [92]. Applying photoacoustic imaging techniques, such as MSOT, could provide a solution for this problem by increasing image resolution and imaging depths (± 5 cm) compared to NIRF optical imaging methods (< 2 cm) [56, 114]. For this reason, we

anticipate that future research on MSOT imaging and targeted MSOT-tailored imaging agents may contribute to clinical translation. Furthermore, the development of implantable and biodegradable optical waveguides, which can assist in the delivery of light, also provides a promising platform to overcome the hurdles imposed by tissue turbidity [115].

One other major challenge for (targeted) clinical optical fluorescent imaging in making the final step towards the clinic will be the design of standardized image acquisition, quantification, validation and reporting methods. The lack of standardized protocols may have the consequence that future study results will not be comparable and/or reproducible due to heterogeneous outcomes and insufficient towards regulatory approval by agencies like the FDA and EMA. This may lead to the unjustified conclusion that optical fluorescent imaging applications cannot be used for specific clinical purposes, resulting in the unnecessary loss of technology with great potential for the benefit of future patients. Several ICG-guided perfusion studies, for example have attempted to predict anastomotic bowel leakage utilizing a non-standardized fluorescence imaging approach [116–118]. Consequently, these studies may lead to heterogeneous results, reporting and conclusions based on heterogeneous datasets potentially leading to premature conclusions that optical fluorescent ICG perfusion imaging does not significantly contribute to the intraoperative prediction of anastomotic leakage. In order to tackle such an omission, a standardization method for the non-targeted tracer ICG has recently been developed. This proof of concept study showed that the proposed and validated ICG quantification approach, coined WISQ, can aid in prediction of post-operative organ function impairment [119]. Such methodologies are required in order to make optical fluorescent imaging perfusion applications standard of care in the clinic.

During our literature searches, we only identified one study that has investigated the implementation of a standardization method for targeted tracers: fSTREAM. This analytical method combines fluorescent and white-light data with histology to quantify fluorescent signals and determine a normalized threshold for breast cancer tissue as compared to healthy tissue. fSTREAM was validated for the spatial mapping of fluorescent signals in breast cancer and it holds promise for the demarcation of other tumour types [77]. We foresee that reproducibility, widespread clinical implementation and subsequent clinical decision-making based on optical fluorescent imaging will depend on the development of such quantitative methods. Ideally, such methods will be able to combine optical fluorescent imaging data with more conventional imaging data produced with approved imaging modalities like CT, MRI, SPECT and PET/CT when needed. One of the concepts that we believe could add to this standardization is the creation of dedicated optical fluorescence-guided operating theatres for the use of standardized

fluorescence-guided surgery, as demonstrated for GI-tract cancers [61]. Such operating theatres could facilitate efficient and standardized intraoperative and back-table specimen imaging. Another concept that could help clinical translations is the standardization of imaging equipment. Currently, due to the lack of standardization, combined drug-device registration is required leading to additional cost and complexity [120]. Furthermore, based on the previous observations and the different tracer types that have so far been explored, we anticipate that there will be an increasing need for tumour agnostic tracers, which can be used in, e.g. multiple types of cancers and multimodal tracers, which will offer multiple simultaneous imaging opportunities for clinicians in terms of visualizing target tissue and the combined use of different imaging modalities. Other directions for future research are listed in (Table 3).

Importantly, optical fluorescent imaging has already shown its potential to aid in clinical decision-making. Gastrointestinal and head and neck cancers are currently taking a lead in the field of targeted fluorescent imaging. Although optical fluorescence imaging is still in its early clinical translational phase, it offers an innovative range of attractive possibilities concerning fluorescence-guided surgery and disease monitoring, for which it may become an important component of the standard care package in the near future. For example, sentinel lymph node biopsy (SLNB) using ICG has already shown to be as accurate as SLNB using a radioactive tracer, demonstrating the clinical potential of fluorescence imaging techniques [121–123]. The value of optical fluorescent imaging will be even more evident once it has been complemented and enriched with generally accepted standardization and quantification protocols and ultimately providing benefit for the individual patients based on accurate, reproducible and reliable datasets and execution of standardized imaging protocols and quantification methods for each individual imaging session, similarly as is presently the case for the conventional imaging modalities.

This review presents an overview of the field of targeted optical fluorescent imaging, the current status of targeted optical fluorescent imaging and the directions for future research. Despite the systematic methodology that was implemented, a few limitations should be mentioned. First of all, a relatively large number of articles were included by reference screening. This is partially explained by the diverse terminology used in optical fluorescent imaging. Second, the usage of artificial intelligence-based software, such as ASReview, may result in relevant articles being missed, because not all search results are explicitly read and screened for eligibility. Other drawbacks of ASReview are the inability to evaluate the system's error rate and the absence of empirical benchmarks of its performance [40]. Third, we had to narrow down the scope of this review to targeted optical fluorescence imaging due to the many articles

available about non-targeted fluorescence optical imaging. However, this allowed us to focus on the novel methodologies of targeted optical fluorescence imaging.

In conclusion, the field of clinical targeted optical fluorescent imaging is rapidly evolving and expanding, especially in the context of oncology. Nonetheless, this imaging methodology still needs to overcome some major hurdles before it can be part of the standard of care in many clinical applications. Intensive clinical collaboration between nuclear medicine physicians, chemists, pharmacists, physicists, medical specialists and the regulatory agencies and reimbursement policy-makers will be of critical importance for a wider clinical implementation of targeted optical fluorescence imaging. For this reason, it is advisable to establish a clinical optical fluorescent imaging task force in which the aforementioned specialisms collaborate to bring this important field to maturity and clinical standard of care.

Supplementary Information The online version contains supplementary material available at <https://doi.org/10.1007/s00259-021-05504-y>.

Author contributions All authors contributed to the study conception and design. Data collection and analysis were performed by H.M. Schouw, L.A. Huisman and Y. Janssen. The first draft of the manuscript was written by H.M. Schouw and L.A. Huisman. All authors commented on previous versions of the manuscript. All authors read and approved the final manuscript. S. Kruijff and H.H. Boersma were the overall supervisors of the conducted work.

Funding The authors did not receive support from any organization for the submitted work.

Data availability Not applicable.

Code availability Not applicable.

Declarations

Conflict of interest GMvD is founder, owner and CEO of AxelaRx/ TRACER Europe BV, a contract research organisation.

Ethical approval Not applicable.

Consent to participate Not applicable.

Consent for publication Not applicable.

Open Access This article is licensed under a Creative Commons Attribution 4.0 International License, which permits use, sharing, adaptation, distribution and reproduction in any medium or format, as long as you give appropriate credit to the original author(s) and the source, provide a link to the Creative Commons licence, and indicate if changes were made. The images or other third party material in this article are included in the article's Creative Commons licence, unless indicated otherwise in a credit line to the material. If material is not included in the article's Creative Commons licence and your intended use is not permitted by statutory regulation or exceeds the permitted use, you will need to obtain permission directly from the copyright holder. To view a copy of this licence, visit <http://creativecommons.org/licenses/by/4.0/>.

References

1. Dhawan AP, D'Alessandro B, Fu X. Optical imaging modalities for biomedical applications. *IEEE Rev Biomed Eng*. 2010;3:69–92. <https://doi.org/10.1109/RBME.2010.2081975>.
2. Paulinelli RR, Freitas-Junior R, De Souza Rahal RM, De Pádua Oliveira LF, Vilela MHT, Moreira MAR, Alves KL, Peleja MB, De Resende TCC. A prospective randomized trial comparing patent blue and methylene blue for the detection of the sentinel lymph node in breast cancer patients. *Rev Assoc Med Bras*. 2017;63:118–23. <https://doi.org/10.1590/1806-9282.63.02.118>.
3. Schmid I, Cole SW, Korin YD, Zack JA, Giorgi JV. Detection of cell cycle subcompartments by flow cytometric estimation of DNA-RNA content in combination with dual-color immunofluorescence. *Cytometry*. 2000;39:108–16. [https://doi.org/10.1002/\(sici\)1097-0320\(20000201\)39:2%3c108::aid-cyto3%3e3.0.co;2-4](https://doi.org/10.1002/(sici)1097-0320(20000201)39:2%3c108::aid-cyto3%3e3.0.co;2-4).
4. Dumont EA, Reutelingsperger CPM, Smits JFM, Daemen MJAP, Doevendans PAF, Wellens HJJ, Hofstra L. Real-time imaging of apoptotic cell-membrane changes at the single-cell level in the beating murine heart. *Nat Med*. 2001;7:1352–5. <https://doi.org/10.1038/nm1201-1352>.
5. Joshi BP, Wang TD. Targeted optical imaging agents in cancer: focus on clinical applications. *Contrast Media Mol Imaging*. 2018. <https://doi.org/10.1155/2018/2015237>.
6. Zhu S, Antaris AL, Chen X, Dai H. Near-infrared-II molecular dyes for cancer imaging and surgery HHS public access graphiacl abstract. *Adv Mater*. 2019;31:1900321. <https://doi.org/10.1002/adma.201900321>.
7. Ntziachristos V, Ripoll J, Wang LV, Weissleder R. Looking and listening to light: the evolution of whole-body photonic imaging. *Nat Biotechnol*. 2005;23:313–20. <https://doi.org/10.1038/nbt1074>.
8. Ishizawa T, Fukushima N, Shibahara J, Masuda K, Tamura S, Aoki T, Hasegawa K, Beck Y, Fukayama M, Kokudo N. Real-time identification of liver cancers by using indocyanine green fluorescent imaging. *Cancer*. 2009;115:2491–504. <https://doi.org/10.1002/cncr.24291>.
9. Schaafsma BE, Mieog JSD, Hutteman M, van der Vorst JR, Kuppen PJK, Löwik CWGM, Frangioni JV, van de Velde CJH, Vahrmeijer AL. The clinical use of indocyanine green as a near-infrared fluorescent contrast agent for image-guided oncologic surgery. *J Surg Oncol*. 2011;104:323–32. <https://doi.org/10.1002/jso.21943>.
10. Reuthebuch O, Häussler A, Genoni M, Tavakoli R, Odavic D, Kadner A, Turina M. Novadaq SPY: intraoperative quality assessment in off-pump coronary artery bypass grafting. *Chest*. 2004;125:418–24. <https://doi.org/10.1378/chest.125.2.418>.
11. Reinhart MB, Huntington CR, Blair LJ, Heniford BT, Augenstein VA. Indocyanine green :historical context, current applications, and future considerations. *Surg Innov*. 2016;23:166–75. <https://doi.org/10.1177/1553350615604053>.
12. Predina JD, Newton AD, Corbett C, Shin M, Sulfyok LF, Okusanya OT, Delikatny EJ, Nie S, Gaughan C, Jarrar D, Pechet T, Kucharczuk JC, Singhal S. Near-infrared intraoperative imaging for minimally invasive pulmonary metastasectomy for sarcomas. *J Thorac Cardiovasc Surg*. 2019;157:2061–9. <https://doi.org/10.1016/j.jtcvs.2018.10.169>.
13. Newton AD, Predina JD, Shin MH, Frenzel-Sulyok LG, Vollmer CM, Drebin JA, Singhal S, Lee MK. Intraoperative near-infrared imaging can identify neoplasms and aid in real-time margin assessment during pancreatic resection. *Ann Surg*. 2019;270:12–20. <https://doi.org/10.1097/SLA.0000000000003201>.

14. Newton AD, Predina JD, Nie S, Low P, Singhal S. Intraoperative fluorescence imaging in thoracic surgery. *J Surg Oncol*. 2018;118:344–55. <https://doi.org/10.1002/jso.25149>.
15. McWade MA, Thomas G, Nguyen JQ, Sanders ME, Solórzano CC, Mahadevan-Jansen A. Enhancing parathyroid gland visualization using a near infrared fluorescence-based overlay imaging system. *J Am Coll Surg*. 2019;228:730–43. <https://doi.org/10.1016/j.jamcollsurg.2019.01.017>.
16. De Boer LL, Bydlon TM, Van Duijnhoven F, Vranken Peeters M-JTFD, Loo CE, Winter-Warnars GAO, Sanders J, Sterenborg HJCM, Hendriks BHW, Ruers TJM. Towards the use of diffuse reflectance spectroscopy for real-time in vivo detection of breast cancer during surgery. *J Transl Med*. 2018;16:367. <https://doi.org/10.1186/s12967-018-1747-5>.
17. Hentzen JEKR, de Jongh SJ, Hemmer PHJ, van der Plas WY, van Dam GM, Kruijff S. Molecular fluorescence-guided surgery of peritoneal carcinomatosis of colorectal origin: a narrative review. *J Surg Oncol*. 2018;118:332–43. <https://doi.org/10.1002/jso.25106>.
18. Zhang RR, Schroeder AB, Grudzinski JJ, Rosenthal EL, Warram JM, Pinchuk AN, Eliceiri KW, Kuo JS, Weichert JP. Beyond the margins: real-time detection of cancer using targeted fluorophores. *Nat Rev Clin Oncol*. 2017;14:347–64. <https://doi.org/10.1038/nrclinonc.2016.212>.
19. Hong G, Antaris AL, Dai H. Near-infrared fluorophores for biomedical imaging. *Nat Biomed Eng*. 2017;1:1–22. <https://doi.org/10.1038/s41551-016-0010>.
20. Joshi BP, Wang TD. Exogenous molecular probes for targeted imaging in cancer: focus on multi-modal imaging. *Cancers (Basel)*. 2010;2:1251–87. <https://doi.org/10.3390/cancers2021251>.
21. van Leeuwen FWB, Cornelissen B, Caobelli F, Evangelista L, Rbahr-Vidal L, Del Vecchio S, Xavier C, Barbet J, de Jong M. Generation of fluorescently labeled tracers—which features influence the translational potential? *EJNMMI Radiopharm Chem*. 2017. <https://doi.org/10.1186/s41181-017-0034-8>.
22. Kobayashi H, Ogawa M, Alford R, Choyke PL, Urano Y. New strategies for fluorescent probe design in medical diagnostic imaging. *Chem Rev*. 2010;110:2620–40. <https://doi.org/10.1021/cr900263j>.
23. Hershel JFW. On a case of superficial colour presented by a homogeneous liquid internally colourless. *Philos Trans R Soc London*. 1845;135:143–5.
24. Stokes G. On the change of refrangibility of light. *Philos Trans R Soc London Ser*. 1852;1(142):463–562.
25. Terai T, Nagano T. Small-molecule fluorophores and fluorescent probes for bioimaging. *Pflug Arch Eur J Physiol*. 2013;465:347–59. <https://doi.org/10.1007/s00424-013-1234-z>.
26. Blodi CF. Looking back: fluorescein angiography and optical coherence tomography and the first century of the American Journal of Ophthalmology. *Am J Ophthalmol*. 2019;202:133–50. <https://doi.org/10.1016/j.ajo.2018.12.010>.
27. Abramowitz M, Flynn BO, Parry-Hill MJ, Davidson MW. Molecular expressions microscopy primer: fluorescence - Jablonski diagram - Interactive Tutorial. n.d. <https://micro.magnet.fsu.edu/primer/java/jablonski/lightandcolor/index.html>. Accessed 9 May 2021.
28. Perez JR, Ybarra N, Chagnon F, Serban M, Pare G, Lesur O, Seuntjens J, El Naqa I. Image-guided fluorescence endomicroscopy: from macro-to micro-imaging of radiation-induced pulmonary fibrosis. *Sci Rep*. 2017;7:48103. <https://doi.org/10.1038/s41598-017-18070-x>.
29. Hu S, Wang LV. Photoacoustic imaging and characterization of the microvasculature. *J Biomed Opt*. 2010. <https://doi.org/10.1117/1.3281673>.
30. Binte A, Attia E, Balasundaram G, Moothanchery M, Dinish US, Bi R, Ntziachristos V, Olivo M. A review of clinical photoacoustic imaging: current and future trends. *Photoacoustics*. 2019. <https://doi.org/10.1016/j.pacs.2019.100144>.
31. Koch M, Symvoulidis P, Ntziachristos V. Tackling standardization in fluorescence molecular imaging. *Nature Photon*. 2018;12(9):505–15. <https://doi.org/10.1038/s41566-018-0221-5>.
32. Yang H, Kim J, Nam W, Kim HJ, Cha I-h, Kim D. Handheld near-infrared fluorescence imaging device using modified action cameras for peri-operative guidance of microvascular flap surgery. *J Clin Med*. 2021;10(3):410. <https://doi.org/10.3390/jcm10030410>.
33. Belykh E, Ngo B, Farhadi DS, Zhao X, Mooney MA, White WL, Daniels JK, Little AS, Eschbacher JM, Preul MC. Confocal laser endomicroscopy assessment of pituitary tumor microstructure: A feasibility study. *J Clin Med*. 2020;9(10):3146. <https://doi.org/10.3390/jcm9103146>.
34. Koller M, Qiu SQ, Linssen MD, Jansen L, Kelder W, de Vries J, Kruithof I, Zhang GJ, Robinson DJ, Nagengast WB, Jorritsma-Smit A, van der Vegt B, van Dam GM. Implementation and benchmarking of a novel analytical framework to clinically evaluate tumor-specific fluorescent tracers. *Nat Commun*. 2018. <https://doi.org/10.1038/s41467-018-05727-y>.
35. Giacalone G, Yamamoto T, Belva F, Hayashi A. Bedside 3D visualization of lymphatic vessels with a handheld multispectral optoacoustic tomography device. *J Clin Med* 2020;9(3):815. <https://doi.org/10.3390/jcm9030815>.
36. de Vries HM, Bekers E, van Oosterom MN, Baris Karakullukcu M, van der Poel HG, van Leeuwen FW, Buckle T, Brouwer OR. c-MET receptor-targeted fluorescence on the road to image-guided surgery in penile squamous cell carcinoma patients. *J Nucl Med*. 2021. <https://doi.org/10.2967/jnumed.120.261864>.
37. Le Cleach L, Doney E, Katz KA, Williams HC, Trinquart L. Research techniques made simple: workflow for searching databases to reduce evidence selection bias in systematic reviews. *J Invest Dermatol*. 2016;136:125–9. <https://doi.org/10.1016/j.jid.2016.09.019>.
38. Wong G, Greenhalgh T, Westhorp G, Buckingham J, Pawson R. RAMESES publication standards: meta-narrative reviews. *J Adv Nurs*. 2013;69:987–1004. <https://doi.org/10.1111/jan.12092>.
39. Schoot R, Bruin J, Schram R, Zahedi P, Boer J, Weijdemans F, Kramer B, Huijts M, Hoogerwerf M, Ferdinands G, Harkema A, Willemsen J, Ma Y, Fang Q, Tummers L, Oberski D. ASReview: open source software for efficient and transparent active learning for systematic reviews. 2020.
40. van de Schoot R, de Bruin J, Schram R, Zahedi P, de Boer J, Weijdemans F, Kramer B, Huijts M, Hoogerwerf M, Ferdinands G, Harkema A, Willemsen J, Ma Y, Fang Q, Hindriks S, Tummers L, Oberski DL. An open source machine learning framework for efficient and transparent systematic reviews. *Nat Mach Intell*. 2021;3:125–33. <https://doi.org/10.1038/s42256-020-00287-7>.
41. Free Reference Manager & Citation Generator - Mendeley. n.d.. <https://www.mendeley.com/reference-management/mendeley-desktop>. Accessed 3 May 2021.
42. Rosenthal EL, Warram JM, De Boer E, Chung TK, Korb ML, Brandwein-Gensler M, Strong TV, Schmalbach CE, Morlandt AB, Agarwal G, Hartman YE, Carroll WR, Richman JS, Clemmons LK, Nabell LM, Zinn KR. Safety and tumor specificity of cetuximab-IRDye800 for surgical navigation in head and neck cancer. *Clin Cancer Res*. 2015;21:3658–66. <https://doi.org/10.1158/1078-0432.CCR-14-3284>.
43. De Boer E, Warram JM, Tucker MD, Hartman YE, Moore LS, De Jong JS, Chung TK, Korb ML, Zinn KR, Van Dam GM, Rosenthal EL, Brandwein-Gensler MS. In vivo fluorescence immunohistochemistry: localization of fluorescently labeled

- cetuximab in squamous cell carcinomas. *Sci Rep*. 2015. <https://doi.org/10.1038/srep10169>.
44. Warram JM, de Boer E, van Dam GM, Moore LS, Bevans SL, Walsh EM, Young ES, Carroll WR, Stevens TM, Rosenthal EL. Fluorescence imaging to localize head and neck squamous cell carcinoma for enhanced pathological assessment. *J Pathol Clin Res*. 2016;2:104–12. <https://doi.org/10.1002/cjp2.40>.
 45. Rosenthal EL, Moore LS, Tipirneni K, De Boer E, Stevens TM, Hartman YE, Carroll WR, Zinn KR, Warram JM. Sensitivity and specificity of cetuximab-IRDye800CW to identify regional metastatic disease in head and neck cancer. *Clin Cancer Res*. 2017;23:4744–52. <https://doi.org/10.1158/1078-0432.CCR-16-2968>.
 46. Moore LS, Rosenthal EL, De Boer E, Prince AC, Patel N, Richman JM, Morlandt AB, Carroll WR, Zinn KR, Warram JM. Effects of an unlabeled loading dose on tumor-specific uptake of a fluorescently labeled antibody for optical surgical navigation HHS public access. *Mol Imaging Biol*. 2017;19:610–6. <https://doi.org/10.1007/s11307-016-1022-1>.
 47. Postema EJ, Boersma HH. Radioimmunotherapy as a treatment modality for non-Hodgkin's lymphoma. *Drugs Future*. 2004;29:95–100. <https://doi.org/10.1358/dof.2004.029.01.850905>.
 48. Gao RW, Teraphongphom NT, van den Berg NS, Martin BA, Oberhelman NJ, Divi V, Kaplan MJ, Hong SS, Lu G, Ertsey R, Tummers WSFJ, Gomez AJ, Holsinger FC, Kong CS, Colevas AD, Warram JM, Rosenthal EL. Determination of tumor margins with surgical specimen mapping using near-infrared fluorescence. *Cancer Res*. 2018;78:5144–54. <https://doi.org/10.1158/0008-5472.CAN-18-0878>.
 49. Van Keulen S, Nishio N, Birkeland A, Fakurnejad S, Martin B, Forouzanfar T, Cunanan K, Colevas AD, Van Den Berg NS, Rosenthal EL. The sentinel margin: intraoperative ex vivo specimen mapping using relative fluorescence intensity. *Clin Cancer Res*. 2019;25:4656–62. <https://doi.org/10.1158/1078-0432.CCR-19-0319>.
 50. Van Keulen S, Van Den Berg NS, Nishio N, Birkeland A, Zhou Q, Lu G, Wang H-W, Middendorf L, Forouzanfar T, Martin BA, Colevas AD, Rosenthal EL. Rapid, non-invasive fluorescence margin assessment: optical specimen mapping in oral squamous cell carcinoma. *Oral Oncol*. 2019;88:58–65. <https://doi.org/10.1016/j.oraloncology.2018.11.012>.
 51. Fakurnejad S, van Keulen S, Nishio N, Engelen M, van den Berg NS, Lu G, Birkeland A, Baik F, Colevas AD, Rosenthal EL, Martin BA. Fluorescence molecular imaging for identification of high-grade dysplasia in patients with head and neck cancer. *Oral Oncol*. 2019;97:50–5. <https://doi.org/10.1016/j.oraloncology.2019.08.008>.
 52. Fakurnejad S, Krishnan G, van Keulen S, Nishio N, Birkeland AC, Baik FM, Kaplan MJ, Colevas AD, van den Berg NS, Rosenthal EL, Martin BA. Intraoperative molecular imaging for ex vivo assessment of peripheral margins in oral squamous cell carcinoma. *Front Oncol*. 2020. <https://doi.org/10.3389/fonc.2019.01476>.
 53. Nishio N, van den Berg NS, van Keulen S, Martin BA, Fakurnejad S, Teraphongphom N, Chirita SU, Oberhelman NJ, Lu G, Horton CE, Kaplan MJ, Divi V, Colevas AD, Rosenthal EL. Optical molecular imaging can differentiate metastatic from benign lymph nodes in head and neck cancer. *Nat Commun*. 2019. <https://doi.org/10.1038/s41467-019-13076-7>.
 54. Nishio N, Van Den Berg NS, Van Keulen S, Martin BA, Fakurnejad S, Zhou Q, Lu G, Chirita SU, Kaplan MJ, Divi V, Colevas AD, Rosenthal EL, Author C. Optimal dosing strategy for fluorescence-guided surgery with panitumumab-IRDye800CW in head and neck cancer HHS public access. *Mol Imaging Biol*. 2020;22:156–64. <https://doi.org/10.1007/s11307-019-01358-x>.
 55. Lu G, Fakurnejad S, Martin BA, van den Berg NS, van Keulen S, Nishio N, Zhu AJ, Chirita SU, Zhou Q, Gao RW, Kong CS, Fischbein N, Penta M, Colevas AD, Rosenthal EL. Predicting therapeutic antibody delivery into human head and neck cancers. *Clin Cancer Res*. 2020;26:2582–94. <https://doi.org/10.1158/1078-0432.CCR-19-3717>.
 56. Nishio N, Van Den Berg NS, Martin BA, Van Keulen S, Fakurnejad S, Rosenthal EL, Wilson KE. Photoacoustic molecular imaging for the identification of lymph node metastasis in head and neck cancer using an anti-EGFR antibody-dye conjugate. *J Nucl Med*. 2020. <https://doi.org/10.2967/jnumed.120.245241>.
 57. Chen C, Tian R, Zeng Y, Chu C, Liu G. Activatable fluorescence probes for “turn-on” and ratiometric biosensing and bioimaging: from NIR-I to NIR-II. *Bioconjug Chem*. 2020;31:276–92. <https://doi.org/10.1021/acs.bioconjchem.9b00734>.
 58. Voskuil FJ, Steinkamp PJ, Zhao T, van der Vegt B, Koller M, Doff JJ, Jayalakshmi Y, Hartung JP, Gao J, Sumer BD, Witjes MJH, van Dam GM. Exploiting metabolic acidosis in solid cancers using a tumor-agnostic pH-activatable nanoprobe for fluorescence-guided surgery. *Nat Commun*. 2020. <https://doi.org/10.1038/s41467-020-16814-4>.
 59. Harlaar NJ, Koller M, de Jongh SJ, van Leeuwen BL, Hemmer PH, Kruijff S, van Ginkel RJ, Been LB, de Jong JS, Kats-Ugurlu G, Linssen MD, Jorritsma-Smit A, van Oosten M, Nagengast WB, Ntziachristos V, van Dam GM. Molecular fluorescence-guided surgery of peritoneal carcinomatosis of colorectal origin: a single-centre feasibility study. *Lancet Gastroenterol Hepatol*. 2016;1:283–90. [https://doi.org/10.1016/S2468-1253\(16\)30082-6](https://doi.org/10.1016/S2468-1253(16)30082-6).
 60. Tjalma JJ, Garcia-Allende PB, Hartmans E, Van Scheltinga AGT, Boersma-Van Ek W, Glatz J, Koch M, Van Herwaarden YJ, Bisseling TM, Nagtegaal ID, Timmer-Bosscha H, Koornstra JJ, Karrenbeld A, Kleibeuker JH, Van Dam GM, Ntziachristos V, Nagengast WB. Molecular fluorescence endoscopy targeting vascular endothelial growth factor a for improved colorectal polyp detection. *J Nucl Med*. 2016;57:480–5. <https://doi.org/10.2967/jnumed.115.166975>.
 61. de Jongh SJ, Tjalma JJJ, Koller M, Linssen MD, Vonk J, Dobosz M, Jorritsma-Smit A, Kleibeuker JH, Hospers GAP, Havenga K, Hemmer PHJ, Karrenbeld A, van Dam GM, van Etten B, Nagengast WB. Back-table fluorescence-guided imaging for circumferential resection margin evaluation using bevacizumab-800CW in patients with locally advanced rectal cancer. *J Nucl Med*. 2020;61:655–61. <https://doi.org/10.2967/jnumed.119.232355>.
 62. Hartmans E, Tjalma JJJ, Linssen MD, Allende PBG, Koller M, Jorritsma-Smit A, Oliveira Nery MS, Elias SG, Karrenbeld A, de Vries EGE, Kleibeuker JH, van Dam GM, Robinson DJ, Ntziachristos V, Nagengast WB. Potential red-flag identification of colorectal adenomas with wide-field fluorescence molecular endoscopy. *Theranostics*. 2018;8:1458–67. <https://doi.org/10.7150/thno.22033>.
 63. Nagengast WB, Hartmans E, Garcia-Allende PB, Peters FTM, Linssen MD, Koch M, Koller M, Tjalma JJJ, Karrenbeld A, Jorritsma-Smit A, Kleibeuker JH, Van Dam GM, Ntziachristos V. Near-infrared fluorescence molecular endoscopy detects dysplastic oesophageal lesions using topical and systemic tracer of vascular endothelial growth factor A. *Gut*. 2019;68:7–10. <https://doi.org/10.1136/gutjnl-2017-314953>.
 64. de Jongh SJ, Voskuil FJ, Schmidt I, Karrenbeld A, Kats-Ugurlu G, Meersma GJ, Westerhof J, Witjes MJH, van Dam GM, Robinson DJ, Nagengast WB. C-Met targeted fluorescence molecular endoscopy in Barrett's esophagus patients and identification

- of outcome parameters for phase-I studies. *Theranostics*. 2020;10:5357–67. <https://doi.org/10.7150/thno.42224>.
65. Matsusaki M, Komeda M, Mura S, Tanaka HY, Kano MR, Couvreur P, Akashi M. Desmoplastic reaction in 3D-pancreatic cancer tissues suppresses molecular permeability. *Adv Healthc Mater*. 2017;6:1700057. <https://doi.org/10.1002/adhm.201700057>.
 66. Lu G, van den Berg NS, Martin BA, Nishio N, Hart ZP, van Keulen S, Fakurnejad S, Chirita SU, Raymundo RC, Yi G, Zhou Q, Fisher GA, Rosenthal EL. Tumour-specific fluorescence-guided surgery for pancreatic cancer using panitumumab-IRDye800CW: a phase 1 single-centre, open-label, single-arm, dose-escalation study. *Artic Lancet Gastroenterol Hepatol*. 2020;5:753–64. [https://doi.org/10.1016/S2468-1253\(20\)30088-1](https://doi.org/10.1016/S2468-1253(20)30088-1).
 67. Tummers WS, Miller SE, Teraphongphom NT, Gomez A, Steinberg I, Huland DM, Hong S, Kothapalli S-R, Hasan A, Ertsey R, Bonsing BA, Vahrmeijer AL, Swijnenburg R-J, Longacre TA, Fisher GA, Gambhir SS, Poultides GA, Rosenthal EL. Intraoperative pancreatic cancer detection using tumor-specific multimodality molecular imaging. *Ann Surg Oncol*. 2018;25:1880–8. <https://doi.org/10.1245/s10434-018-6453-2>.
 68. Hoogstins CES, Boogerd LSF, Sibinga Mulder BG, Mieog JSD, Swijnenburg RJ, van de Velde CJH, Farina Sarasqueta A, Bonsing BA, Framery B, Pèlegriin A, Gutowski M, Cailler F, Burggraaf J, Vahrmeijer AL. Image-guided surgery in patients with pancreatic cancer: first results of a clinical trial using SGM-101, a novel carcinoembryonic antigen-targeting, near-infrared fluorescent agent. *Ann Surg Oncol*. 2018;25:3350–7. <https://doi.org/10.1245/s10434-018-6655-7>.
 69. Meijer RPI, De Valk KS, Deken MM, Boogerd LSF, Hoogstins CES, Bhairasingh SS, Swijnenburg R-J, Bonsing BA, Enice Framery E, Sarasqueta AF, Putter H, Hilling DE, Burggraaf J, Cailler F, Sven J, Mieog D, Vahrmeijer AL. Intraoperative detection of colorectal and pancreatic liver metastases using SGM-101, a fluorescent antibody targeting CEA. *Eur J Surg Oncol*. 2020. <https://doi.org/10.1016/j.ejso.2020.10.034>.
 70. Schaap DP, de Valk KS, Deken MM, Meijer RPI, Burggraaf J, Vahrmeijer AL, Kusters M, Kusters M, Boogerd LSF, Schaap DP, Voogt ELK, Nieuwenhuijzen GAP, Rutten HJT, de Hingh IHJT, Burger JWA, Nienhuijs SW, de Valk KS, Meijer RPI, Burggraaf J, Brandt-Kerkhof ARM, Verhoef C, Madsen EVE, van Kooten JP, Framery B, Gutowski M, PM-hlegriin A, Cailler F, van Lijnschoten I, Vahrmeijer AL, Hoogstins CES, Boogerd LSF, de Valk KS, Deken MM, Meijer RPI. Carcinoembryonic antigen-specific, fluorescent image-guided cytoreductive surgery with hyperthermic intraperitoneal chemotherapy for metastatic colorectal cancer. *Br J Surg*. 2020;107:334–7. <https://doi.org/10.1002/bjs.11523>.
 71. de Valk KS, Deken MM, Schaap DP, Meijer RP, Boogerd LS, Hoogstins CE, van der Valk MJ, Kamerling IM, Bhairasingh SS, Framery B, Hilling DE, Peeters KC, Holman FA, Kusters M, Rutten HJ, Cailler F, Burggraaf J, Vahrmeijer AL. Dose-finding study of a CEA-targeting agent, SGM-101, for intraoperative fluorescence imaging of colorectal cancer. *Ann Surg Oncol*. 2020;28:1832–44. <https://doi.org/10.1245/s10434-020-09069-2>.
 72. Boogerd LSF, Hoogstins CES, Schaap DP, Kusters M, Handgraaf HJM, Van Der Valk JM, Hilling DE, Holman FA, Peeters KCMJ, Mieog SD, Van De Velde JH, Farina-Sarasqueta A, Van Lijnschoten I, Framery B, Pèlegriin A, Gutowski M, Nienhuijs SW, De Hingh IHJT, Nieuwenhuijzen GAP, Rutten JT, Cailler F, Burggraaf J, Vahrmeijer AL. Safety and effectiveness of SGM-101, a fluorescent antibody targeting carcinoembryonic antigen, for intraoperative detection of colorectal cancer: a dose-escalation pilot study. *Lancet Gastroenterol Hepatol*. 2018. [https://doi.org/10.1016/S2468-1253\(17\)30395-3](https://doi.org/10.1016/S2468-1253(17)30395-3).
 73. Elekonawo FMK, De Gooyer JM, Bos DL, Goldenberg DM, Boerman OC, Brosens LAA, Bremers AJA, De Wilt JHW, Rijpkem M. Ex vivo assessment of tumor-targeting fluorescent tracers for image-guided surgery. *Cancers (Basel)*. 2020. <https://doi.org/10.3390/cancers12040987>.
 74. de Valk KS, Deken MM, Handgraaf HJM, Bhairasingh SS, Bijlstra OD, van Esdonk MJ, Terwisscha van Scheltinga AGT, Valentijn ARPM, March TL, Vuijk J, Peeters KCMJ, Holman FA, Hilling DE, Mieog JSD, Frangioni JV, Burggraaf J, Vahrmeijer AL. First-in-human assessment of cRGD-ZW800-1, a Zwitterionic, integrin-targeted, near-infrared fluorescent peptide in colon carcinoma. *Clin Cancer Res*. 2020;26:3990–8. <https://doi.org/10.1158/1078-0432.CCR-19-4156>.
 75. Newton AD, Predina JD, Frenzel-Sulyok LG, Low PS, Singhal S, Roses RE. Intraoperative molecular imaging utilizing a folate receptor-targeted near-infrared probe can identify macroscopic gastric adenocarcinomas. *Mol Imaging Biol*. 2021;23:11–7. <https://doi.org/10.1007/s11307-020-01549-x>.
 76. Lamberts LE, Koch M, De Jong JS, Adams ALL, Glatz J, Kranendonk MEG, Van Scheltinga AGTT, Jansen L, De Vries J, Lub-De Hooge MN, Schröder CP, Jorritsma-Smit A, Linssen MD, De Boer E, Van Der Veegt B, Nagengast WB, Elias SG, Oliveira S, Witkamp AJ, Mali WPTM, Van Der Wall E, Van Diest PJ, De Vries EGE, Ntziachristos V, Van Dam GM. Tumor-specific uptake of fluorescent bevacizumab-IRDye800CW microdosing in patients with primary breast cancer: a phase I feasibility study. *Clin Cancer Res*. 2017;23:2730–41. <https://doi.org/10.1158/1078-0432.CCR-16-0437>.
 77. Koch M, De Jong JS, Glatz J, Symvoulidis P, Lamberts LE, Adams ALL, Kranendonk MEG, Van Terwisscha Scheltinga AGT, Aichler M, Jansen L, De Vries J, De Hooge MNL, Schroder CP, Jorritsma-Smit A, Linssen MD, De Boer E, Der Van Veegt B, Nagengast WB, Elias SG, Oliveira S, Witkamp AJ, Mali WPTM, Der Wall E, Garcia-Allende PB, Van Diest PJ, De Vries EGE, Walch A, Van Dam GM, Ntziachristos V. Threshold analysis and biodistribution of fluorescently labeled bevacizumab in human breast cancer. *Cancer Res*. 2017;77:623–31. <https://doi.org/10.1158/0008-5472.CAN-16-1773>.
 78. Smith BL, Lanahan CR, Specht MC, Kelly BN, Brown C, Strassfeld DB, Ferrer JM, Rai U, Tang R, Rice-Stitt T, Biernacka A, Brachtel EF, Gadd MA. Feasibility study of a novel protease-activated fluorescent imaging system for real-time, intraoperative detection of residual breast cancer in breast conserving surgery. *Ann Surg Oncol*. 2020;27:1854. <https://doi.org/10.1245/S10434-019-08158-1>.
 79. van Dam G, Themelis G, Crane L et al. Intraoperative tumor-specific fluorescence imaging in ovarian cancer by folate receptor- α targeting: first in-human results. *Nat Med*. 2011;17:1315–9. <https://doi.org/10.1038/nm.2472>.
 80. Hoogstins CES, Tummers QRJG, Gaarenstroom KN, De Kroon CD, Trimbos JBMZ, Bosse T, Smit VTHBM, Vuyk J, Van De Velde CJH, Cohen AF, Low PS, Burggraaf J, Vahrmeijer AL. A novel tumor-specific agent for intraoperative near-infrared fluorescence imaging: a translational study in healthy volunteers and patients with ovarian cancer. *Clin Cancer Res*. 2016;22:2929–38. <https://doi.org/10.1158/1078-0432.CCR-15-2640>.
 81. Boogerd LSF, Hoogstins CES, Gaarenstroom KN, de Kroon CD, Beltman JJ, Bosse T, Stelloo E, Vuyk J, Low PS, Burggraaf J, Vahrmeijer AL. Folate receptor- α targeted near-infrared fluorescence imaging in high-risk endometrial cancer patients: a tissue microarray and clinical feasibility study. *Oncotarget*. 2018;9:791–801. <https://doi.org/10.18632/oncotarget.23155>.
 82. Lee JYK, Cho SS, Zeh R, Pierce JT, Martinez-Lage M, Adappa ND, Palmer JN, Newman JG, Learned KO, White C, Kharlip J, Snyder P, Low PS, Singhal S, Grady MS. Folate receptor overexpression can be visualized in real time during pituitary adenoma

- endoscopic transsphenoidal surgery with near-infrared imaging. *J Neurosurg.* 2018;129:390–403. <https://doi.org/10.3171/2017.2.JNS163191>.
83. Cho SS, Jeon J, Buch L, Nag S, Nasrallah M, Low PS, Grady MS, Singhal S, Lee JYK. Intraoperative near-infrared imaging with receptor-specific versus passive delivery of fluorescent agents in pituitary adenomas. *J Neurosurg.* 2019;131:1974–84. <https://doi.org/10.3171/2018.7.JNS181642>.
 84. Cho SS, Zeh R, Pierce JT, Jeon J, Nasrallah M, Adappa ND, Palmer JN, Newman JG, White C, Kharlip J, Snyder P, Low P, Singhal S, Grady MS, Lee JYK. Folate receptor near-infrared optical imaging provides sensitive and specific intraoperative visualization of nonfunctional pituitary adenomas. *Oper Neurosurg.* 2019;16:59–70. <https://doi.org/10.1093/ons/opy034>.
 85. Li D, Zhang J, Chi C, Xiao X, Wang J, Lang L, Ali I, Niu G, Zhang L, Tian J, Ji N, Zhu Z, Chen X. First-in-human study of PET and optical dual-modality image-guided surgery in glioblastoma using ⁶⁸Ga-IRDye800CW-BBN. *Theranostics.* 2018;8:2508–20. <https://doi.org/10.7150/thno.25599>.
 86. Miller SE, Tummers WS, Teraphongphom N, van den Berg NS, Hasan A, Ertsey RD, Nagpal S, Recht LD, Plowey ED, Vogel H, Harsh GR, Grant GA, Li GH, Rosenthal EL. First-in-human intraoperative near-infrared fluorescence imaging of glioblastoma using cetuximab-IRDye800. *J Neurooncol.* 2018;139:135–43. <https://doi.org/10.1007/s11060-018-2854-0>.
 87. Patil CG, Walker DG, Miller DM, Butte P, Morrison B, Kittle DS, Hansen SJ, Nufer KL, Byrnes-Blake KA, Yamada M, Lin LL, Pham K, Perry J, Parrish-Novak J, Ishak L, Prow T, Black K, Mamelak AN. Phase 1 safety, pharmacokinetics, and fluorescence imaging study of tozuleristide (BLZ-100) in adults with newly diagnosed or recurrent gliomas. *Neurosurgery.* 2019. <https://doi.org/10.1055/b-006-161124>.
 88. Miller DM, Lee A, Ojemann J, Cole B, Poliachik S, Ishak L, Hansen S, Novak J, Leary S. Phase 1 dose escalation and expansion safety study of BLZ-100 in pediatric subjects with primary central nervous system tumors. *J Clin Oncol.* 2016;34:TPS10584–TPS10584. https://doi.org/10.1200/jco.2016.34.15_suppl.tps10584.
 89. Dijkstra BM, de Jong M, Stroet MCM, Andreae F, Dulfer SE, Everts M, Kruijff S, Nonnekens J, den Dunnen WFA, Kruyt FAE, Groen RJM. Evaluation of Ac-Lys0(IRDye800CW)Tyr3-octreotate as a novel tracer for SSTR2-targeted molecular fluorescence guided surgery in meningioma. *J Neurooncol.* 2021. <https://doi.org/10.1007/s11060-021-03739-1>.
 90. Kennedy GT, Okusanya OT, Keating JJ, Heitjan DF, Deshpande C, Litzky LA, Albelda SM, Drebin JA, Nie S, Low PS, Singhal S. The optical biopsy: a novel technique for rapid intraoperative diagnosis of primary pulmonary adenocarcinomas. *Ann Surg.* 2015;262:602–9. <https://doi.org/10.1097/SLA.0000000000001452>.
 91. Okusanya OT, Dejesus EM, Jiang JX, Judy RP, Venegas OG, Deshpande CG, Heitjan DF, Nie S, Low PS, Singhal S. Intraoperative molecular imaging can identify lung adenocarcinomas during pulmonary resection. *J Thorac Cardiovasc Surg.* 2015;150:28–35. <https://doi.org/10.1016/j.jtcvs.2015.05.014>.
 92. Predina JD, Newton AD, Keating J, Dunbar A, Connolly C, Baldassari M, Mizelle J, Xia L, Deshpande C, Kucharczuk J, Low PS, Singhal S. A phase I clinical trial of targeted intraoperative molecular imaging for pulmonary adenocarcinomas. *Ann Thorac Surg.* 2018;105:901–8. <https://doi.org/10.1016/j.athoracsur.2017.08.062>.
 93. Predina JD, Newton AD, Keating J, Barbosa EMJ, Okusanya O, Xia L, Dunbar A, Connolly C, Baldassari MP, Mizelle J, Delikatny EJ, Kucharczuk JC, Deshpande C, Kularatne SA, Low P, Drebin J, Singhal S. Intraoperative molecular imaging combined with positron emission tomography improves surgical management of peripheral malignant pulmonary nodules. *Ann Surg.* 2017;266:479–88. <https://doi.org/10.1097/SLA.00000000000002382>.
 94. Predina JD, Newton AD, Xia L, Corbett C, Connolly C, Shin M, Sulyok LF, Litzky L, Deshpande C, Nie S, Kularatne SA, Low PS, Singhal S. An open label trial of folate receptor-targeted intraoperative molecular imaging to localize pulmonary squamous cell carcinomas. *Oncotarget.* 2018;9:13517–29. <https://doi.org/10.18632/oncotarget.24399>.
 95. Predina JD, Newton A, Corbett C, Xia L, Sulyok LF, Shin M, Deshpande C, Litzky L, Barbosa E, Low PS, Kucharczuk JC, Singhal S. Localization of pulmonary ground-glass opacities with folate receptor-targeted intraoperative molecular imaging. *J Thorac Oncol.* 2018;13:1028–36. <https://doi.org/10.1016/j.jtho.2018.03.023>.
 96. Hekman MCH, Boerman OC, De Weijert M, Bos DL, Oosterwijk E, Langenhuijsen HF, Mulders PFA, Rijpkema M. Targeted dual-modality imaging in renal cell carcinoma: an ex vivo kidney perfusion study. *Clin Cancer Res.* 2016;22:4634–46442. <https://doi.org/10.1158/1078-0432.CCR-15-2937>.
 97. Hekman MC, Rijpkema M, Muselaers CH, Oosterwijk E, Hulsbergen-Van de Kaa CA, Boerman OC, Oyen WJ, Langenhuijsen JF, Mulders PF. Tumor-targeted dual-modality imaging to improve intraoperative visualization of clear cell renal cell carcinoma: a first in man study. *Theranostics.* 2018;8:2161–70. <https://doi.org/10.7150/thno.23335>.
 98. Golijanin J, Amin A, Moshnikova A, Brito JM, Tran TY, Adochite RC, Andreev GO, Crawford T, Engelman DM, Andreev OA, Reshetnyak YK, Golijanin D. Targeted imaging of urothelium carcinoma in human bladders by an ICG pHLIP peptide ex vivo. *Proc Natl Acad Sci USA.* 2016;113:11829–34. <https://doi.org/10.1073/pnas.1610472113>.
 99. Steinkamp PJ, Pranger BK, Li M, Linssen MD, Voskuil FJ, Been LB, van Leeuwen BL, Suurmeijer AJH, Nagengast WB, Kruijff SK, van Ginkel RJ, van Dam GM. Fluorescence-guided visualization of soft tissue sarcomas by targeting vascular endothelial growth factor-A: a phase 1 single-center clinical trial. *J Nucl Med.* 2020. <https://doi.org/10.2967/jnumed.120.245696>.
 100. Samkoe KS, Sardar HS, Gunn J et al. Measuring microdose ABY-029 fluorescence signal in a primary human soft-tissue sarcoma resection. *Proc SPIE Int Soc Opt Eng.* 2019;10862:1086212. <https://doi.org/10.1117/12.2510935>.
 101. Hennerici M, Hülsbömer HB, Heftner H, Lammerts D, Rautenberg W. Natural history of asymptomatic extracranial arterial disease: results of a long-term prospective study. *Brain.* 1987;110:777–91. <https://doi.org/10.1093/brain/110.3.777>.
 102. Razansky D, Harlaar NJ, Hillebrands JL, Taruttis A, Herzog E, Zeebregts CJ, Van Dam GM, Ntziachristos V. Multispectral optoacoustic tomography of matrix metalloproteinase activity in vulnerable human carotid plaques. *Mol Imaging Biol.* 2012;14:277–85. <https://doi.org/10.1007/s11307-011-0502-6>.
 103. Jager NA, Wallis de Vries BM, Hillebrands JL, Harlaar NJ, Tio RA, Slart RHJA, van Dam GM, Boersma HH, Zeebregts CJ, Westra J. Distribution of matrix metalloproteinases in human atherosclerotic carotid plaques and their production by smooth muscle cells and macrophage subsets. *Mol Imaging Biol.* 2016;18:283–91. <https://doi.org/10.1007/s11307-015-0882-0>.
 104. Jager NA, Westra J, Van Dam GM, Teteloshvili N, Tio RA, Breek JC, Slart RHJA, Boersma H, Low PS, Bijl M, Zeebregts CJ. Targeted folate receptor β fluorescence imaging as a measure of inflammation to estimate vulnerability within human atherosclerotic carotid plaque. *J Nucl Med.* 2012;53:1222–9. <https://doi.org/10.2967/jnumed.111.099671>.
 105. Lam MK, Al-Ansari S, Van Dam GM, Tio RA, Breek JC, Slart RHJA, Hillebrands JL, Zeebregts CJ. Single-chain VEGF/Cy5.5 targeting VEGF receptors to indicate atherosclerotic plaque

- instability. *Mol Imaging Biol.* 2013;15:250–61. <https://doi.org/10.1007/s11307-012-0594-7>.
106. Huisman LA, Steinkamp PJ, Hillebrands J-L, Zeebregts CJ, Linsen MD, Jorritsma-Smit A, Slart RHJA, van Dam GM, Boersma HH. Feasibility of ex vivo fluorescence imaging of angiogenesis in (non-) culprit human carotid atherosclerotic plaques using bevacizumab-800CW. *Sci Rep.* 2021;11:2899. <https://doi.org/10.1038/s41598-021-82568-8>.
 107. Steinkamp PJ, Vonk J, Huisman LA, Meersma G, Diercks GFH, Hillebrands J, Nagengast WB, Zeebregts CJ, Slart RHJA, Boersma HH, Van Dam GM. VEGF-targeted multispectral optoacoustic tomography and fluorescence molecular imaging in human carotid atherosclerotic plaques. *Diagnostics.* 2021;11:1227. <https://doi.org/10.3390/diagnostics11071227>.
 108. Akram AR, Chankeshwara SV, Scholefield E, Aslam T, McDonald N, Megia-Fernandez A, Marshall A, Mills B, Avlonitis N, Craven TH, Smyth AM, Collie DS, Gray C, Hirani N, Hill AT, Govan JR, Walsh T, Haslett C, Bradley M, Dhaliwal K. In situ identification of gram-negative bacteria in human lungs using a topical fluorescent peptide targeting lipid A. *Sci Transl Med.* 2018. <https://doi.org/10.1126/scitranslmed.aal0033>.
 109. López-Álvarez M, Heuker M, Schoenmakers JWA, van Dam GM, McNamara JO, van Dijk JM, van Oosten M. The smart activatable P2&3TT probe allows accurate, fast, and highly sensitive detection of *Staphylococcus aureus* in clinical blood culture samples. *Sci Rep.* 2020. <https://doi.org/10.1038/s41598-020-76254-4>.
 110. Van Oosten M, Schäfer T, Gazendam JAC, Ohlsen K, Tsompanidou E, De Goffau MC, Harmsen HJM, Crane LMA, Lim E, Francis KP, Cheung L, Olive M, Ntziachristos V, Van Dijk JM, Van Dam GM. Real-time in vivo imaging of invasive- and biomaterial-associated bacterial infections using fluorescently labelled vancomycin. *Nat Commun.* 2013. <https://doi.org/10.1038/ncomms3584>.
 111. Schoenmakers JWA, Heuker M, López-Álvarez M, Nagengast WB, van Dam GM, van Dijk JM, Jutte PC, van Oosten M. Image-guided in situ detection of bacterial biofilms in a human prosthetic knee infection model: a feasibility study for clinical diagnosis of prosthetic joint infections. *Eur J Nucl Med Mol Imaging.* 2020. <https://doi.org/10.1007/s00259-020-04982-w>.
 112. Abgral R, Bourhis D, Salaun PY. Clinical perspectives for the use of total body PET/CT. *Eur J Nucl Med Mol Imaging.* 2021;48:1712–8. <https://doi.org/10.1007/s00259-021-05293-4>.
 113. Hsieh CJ, Chen YC, Hsieh PY, Liu SR, Wu SP, Hsieh YZ, Hsu HY. Graphene oxide based nanocarrier combined with a pH-sensitive tracer: a vehicle for concurrent pH sensing and pH-responsive oligonucleotide delivery. *ACS Appl Mater Interfaces.* 2015;7:11467–75. <https://doi.org/10.1021/acsami.5b02397>.
 114. Zhu B, Sevcik-Muraca EM. A review of performance of near-infrared fluorescence imaging devices used in clinical studies. *Br J Radiol.* 2015. <https://doi.org/10.1259/bjr.20140547>.
 115. Shan D, Zhang C, Kalaba S, Mehta N, Kim GB, Liu Z, Yang J. Flexible biodegradable citrate-based polymeric step-index optical fiber. *Biomaterials.* 2017;143:142–8. <https://doi.org/10.1016/j.biomaterials.2017.08.003>.
 116. Blanco-Colino R, Espin-Basany E. Intraoperative use of ICG fluorescence imaging to reduce the risk of anastomotic leakage in colorectal surgery: a systematic review and meta-analysis. *Tech Coloproctol.* 2018;22:15–23. <https://doi.org/10.1007/s10151-017-1731-8>.
 117. Tsang Y, Leung LHA, Lau C, Tang C. Indocyanine green fluorescence angiography to evaluate anastomotic perfusion in colorectal surgery. *Int J Colorectal Dis.* 2020;35:1133–9. <https://doi.org/10.1007/s00384-020-03592-0>.
 118. Impellizzeri HG, Pulvirenti A, Inama M, Bacchion M, Marrano E, Creciun M, Casaril A, Moretto G. Near-infrared fluorescence angiography for colorectal surgery is associated with a reduction of anastomotic leak rate. *Updates Surg.* 2020;72:991–8. <https://doi.org/10.1007/s13304-020-00758-x>.
 119. Noltes ME, Metman MJ, Heeman W, Rotstein L, van Ginhoven TM, Vriens MR, Engelsman AF, Boerma CE, Brouwers AH, van Dam GM, Pastern JD, Kruijff S. A novel and generic workflow of indocyanine green perfusion assessment integrating standardization and quantification towards clinical implementation. *Ann Surg.* 2021. <https://doi.org/10.1097/SLA.0000000000004978>.
 120. Tummers WS, Warram JM, Tipirneni KE, Fengler J, Jacobs P, Shankar L, Henderson L, Ballard B, Pogue BW, Weichert JP, Bouvet M, Sorger J, Contag CH, Frangioni JV, Tweedle MF, Basilion JP, Gambhir SS, Rosenthal EL. Regulatory aspects of optical methods and exogenous targets for cancer detection. *Cancer Res.* 2017;77:2197–206. <https://doi.org/10.1158/0008-5472.CAN-16-3217>.
 121. Grischke E-M, Röhm C, Hahn M, Helms G, Brucker S, Wallwiener D. ICG fluorescence technique for the detection of sentinel lymph nodes in breast cancer: results of a prospective open-label clinical trial. *Geburtshilfe Frauenheilkde.* 2015;75:935. <https://doi.org/10.1055/S-0035-1557905>.
 122. Papathelemis T, Jablonski E, Scharl A, Hauzenberger T, Gerken M, Klinkhammer-Schalke M, Hipp M, Scharl S. Sentinel lymph node biopsy in breast cancer patients by means of indocyanine green using the Karl Storz VITOM® fluorescence camera. *Biomed Res Int.* 2018. <https://doi.org/10.1155/2018/6251468>.
 123. Lin J, Lin L, Chen D, Lin K, Wang Y, Chang Y. Indocyanine green fluorescence method for sentinel lymph node biopsy in breast cancer. *Asian J Surg.* 2020;43:1149–53. <https://doi.org/10.1016/J.ASJSUR.2020.02.003>.
 124. Lerch MM, Hansen J, Van Dam M, Szymanski W, Feringa BL. Emerging targets in photopharmacology. *Med Chem (Los Angeles).* 2016. <https://doi.org/10.1002/ange.201601931>.

Publisher's note Springer Nature remains neutral with regard to jurisdictional claims in published maps and institutional affiliations.